



I.G.M. Corporation

Incas Gold Mine Corporation

650 South Hill Street Suite #218

Los Angeles, CA 90014

Tel: (213)627-8916 Fax: (213)627-1990

www.incasgoldmine.com email@incasgoldmine.com

Order by Fax or Email

Please include the **Style Code** and the quantity of each style and fax or email the order to us.
For an optional order form, please visit our website, www.incasgoldmine.com/forms

Fax: (213)627-1990

email: order@incasgoldmine.com

Some items are NOT to Scale. View the Dimensions for an accurate measurement.



Style Code: E050-001
Approximate Weight 0.5 g

Description :
Hoop Earrings : YL : 1.5
gauge : Round/Oval : Hollow
Plain : Endless Closure : 14kt
Gold

Clasp: Endless Closure
Inside Diameter \$8.50
Size:

Dimensions: 11.0 mm X 11.0 mm

Stone Type:
Main Stone Color:

We have 131 Prs in stock as of
4/18/2025 4:20:09 PM



Style Code: E050-002
Approximate Weight 0.7 g

Description :
Hoop Earrings : YL : 1.5
gauge : Round/Oval : Hollow
Plain : Endless Closure : 14kt
Gold

Clasp: Endless Closure
Inside Diameter \$12.00
Size:

Dimensions: 15.0 mm X 15.0 mm

Stone Type:
Main Stone Color:

We have 0 Prs in stock as of
4/18/2025 4:20:09 PM



Style Code: E050-003
Approximate Weight 0.9 g

Description :
Hoop Earrings : YL : 1.5
gauge : Round/Oval : Hollow
Plain : Endless Closure : 14kt
Gold

Clasp: Endless Closure
Inside Diameter \$16.00
Size:

Dimensions: 20.0 mm X 20.0 mm

Stone Type:
Main Stone Color:

We have 0 Prs in stock as of
4/18/2025 4:20:09 PM



Style Code: E050-004
Approximate Weight 1.0 g

Description :
Hoop Earrings : YL : 1.5
gauge : Round/Oval : Hollow
Plain : Endless Closure : 14kt
Gold

Clasp: Endless Closure
Inside Diameter \$20.00
Size:

Dimensions: 24.5 mm X 25.0 mm

Stone Type:
Main Stone Color:

We have 0 Prs in stock as of
4/18/2025 4:20:09 PM



Style Code: E050-005
Approximate Weight 1.4 g

Description :
Hoop Earrings : YL : 1.5
gauge : Round/Oval : Hollow
Plain : Endless Closure : 14kt
Gold

Clasp: Endless Closure
Inside Diameter \$30.00
Size:

Dimensions: 34.0 mm X 35.0 mm

Stone Type:
Main Stone Color:

We have 0 Prs in stock as of
4/18/2025 4:20:09 PM



Style Code: E050-006
Approximate Weight 1.9 g

Description :
Hoop Earrings : YL : 1.5
gauge : Round/Oval : Hollow
Plain : Endless Closure : 14kt
Gold

Clasp: Endless Closure
Inside Diameter \$41.00
Size:

Dimensions: 44.0 mm X 45.0 mm

Stone Type:
Main Stone Color:

We have 0 Prs in stock as of
4/18/2025 4:20:09 PM



I.G.M. Corporation

Incas Gold Mine Corporation

650 South Hill Street Suite #218

Los Angeles, CA 90014

Tel: (213)627-8916 Fax: (213)627-1990

www.incasgoldmine.com email@incasgoldmine.com

Order by Fax or Email

Please include the **Style Code** and the quantity of each style and fax or email the order to us.
For an optional order form, please visit our website, www.incasgoldmine.com/forms

Fax: (213)627-1990

email: order@incasgoldmine.com

Some items are NOT to Scale. View the Dimensions for an accurate measurement.



Style Code: E050-008
Approximate Weight 2.5 g

Description :
Hoop Earrings : YL : 1.5
gauge : Round/Oval : Hollow
Plain : Endless Closure : 14kt
Gold

Clasp: Endless Closure
Inside Diameter \$57.00
Size:

Dimensions: 59.0 mm X 60.0 mm

Stone Type:
Main Stone Color:

We have 0 Prs in stock as of
4/18/2025 4:20:09 PM



Style Code: E050-051
Approximate Weight 0.6 g

Description :
Hoop Earrings : WT : 1
gauge : Round/Oval : Hollow
Plain : Endless Closure : 14kt
Gold

Clasp: Endless Closure
Inside Diameter \$12.00
Size:

Dimensions: 14.5 mm X 14.5 mm

Stone Type:
Main Stone Color:

We have 35 Prs in stock as of
4/18/2025 4:20:09 PM



Style Code: E050-052
Approximate Weight 0.9 g

Description :
Hoop Earrings : WT : 1
gauge : Round/Oval : Hollow
Plain : Endless Closure : 14kt
Gold

Clasp: Endless Closure
Inside Diameter \$14.00
Size:

Dimensions: 16.0 mm X 16.0 mm

Stone Type:
Main Stone Color:

We have 62 Prs in stock as of
4/18/2025 4:20:09 PM



Style Code: E050-053
Approximate Weight 1.3 g

Description :
Hoop Earrings : WT : 1.3
gauge : Round/Oval : Hollow
Plain : Endless Closure : 14kt
Gold

Clasp: Endless Closure
Inside Diameter \$20.00
Size:

Dimensions: 23.0 mm X 23.0 mm

Stone Type:
Main Stone Color:

We have 9 Prs in stock as of
4/18/2025 4:20:09 PM



Style Code: E050-054
Approximate Weight 1.3 g

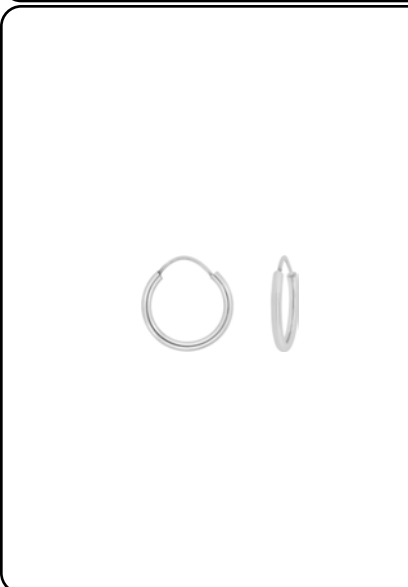
Description :
Hoop Earrings : WT : 1.5
gauge : Round/Oval : Hollow
Plain : Endless Closure : 14kt
Gold

Clasp: Endless Closure
Inside Diameter \$21.00
Size:

Dimensions: 24.0 mm X 24.0 mm

Stone Type:
Main Stone Color:

We have 6 Prs in stock as of
4/18/2025 4:20:09 PM



Style Code: E051-051
Approximate Weight 0.7 g

Description :
Hoop Earrings : WT : 1.7
gauge : Round/Oval : Hollow
Plain : Endless Closure : 14kt
Gold

Clasp: Endless Closure
Inside Diameter \$11.00
Size:

Dimensions: 14.0 mm X 14.0 mm

Stone Type:
Main Stone Color:

We have 8 Prs in stock as of
4/18/2025 4:20:09 PM



I.G.M. Corporation

Incas Gold Mine Corporation
650 South Hill Street Suite #218
Los Angeles, CA 90014
Tel: (213)627-8916 Fax: (213)627-1990
www.incasgoldmine.com email@incasgoldmine.com

Order by Fax or Email

Please include the **Style Code** and the quantity of each style and fax or email the order to us.
For an optional order form, please visit our website, www.incasgoldmine.com/forms

Fax: (213)627-1990 email: order@incasgoldmine.com

Some items are NOT to Scale. View the Dimensions for an accurate measurement.

Style Code: E051-052

Approximate Weight 0.9 g

Description :

Hoop Earrings : WT : 2
gauge : Round/Oval : Hollow
Plain : Endless Closure : 14kt
Gold



Clasp: Endless Closure

Inside Diameter \$14.00

Size:

Dimensions: 18.0 mm X 18.0 mm

Stone Type:

Main Stone Color:

We have 7 Prs in stock as of
4/18/2025 4:20:09 PM

Style Code: E051-053

Approximate Weight 1.7 g

Description :

Hoop Earrings : WT : 2
gauge : Round/Oval : Hollow
Plain : Endless Closure : 14kt
Gold



Clasp: Endless Closure

Inside Diameter \$22.00

Size:

Dimensions: 25.0 mm X 25.0 mm

Stone Type:

Main Stone Color:

We have 11 Prs in stock as of
4/18/2025 4:20:09 PM

Style Code: E051-054

Approximate Weight 2.5 g

Description :

Hoop Earrings : WT : 2
gauge : Round/Oval : Hollow
Plain : Endless Closure : 14kt
Gold



Clasp: Endless Closure

Inside Diameter \$28.00

Size:

Dimensions: 31.0 mm X 31.0 mm

Stone Type:

Main Stone Color:

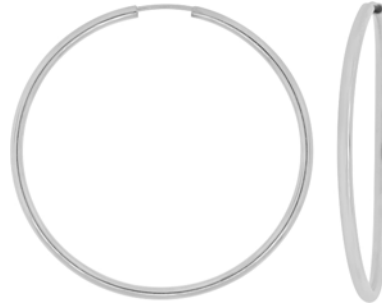
We have 11 Prs in stock as of
4/18/2025 4:20:09 PM

Style Code: E051-055

Approximate Weight 3.1 g

Description :

Hoop Earrings : WT : 2.2
gauge : Round/Oval : Hollow
Plain : Endless Closure : 14kt
Gold



Clasp: Endless Closure

Inside Diameter \$36.00

Size:

Dimensions: 39.0 mm X 39.0 mm

Stone Type:

Main Stone Color:

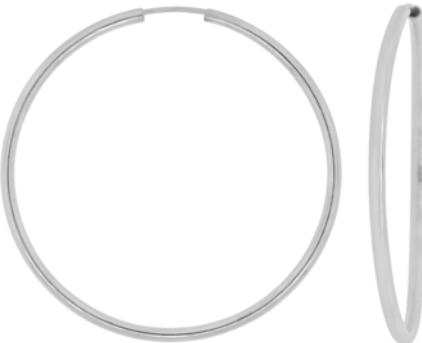
We have 8 Prs in stock as of
4/18/2025 4:20:09 PM

Style Code: E051-056

Approximate Weight 3.9 g

Description :

Hoop Earrings : WT : 2.2
gauge : Round/Oval : Hollow
Plain : Endless Closure : 14kt
Gold



Clasp: Endless Closure

Inside Diameter \$44.00

Size:

Dimensions: 48.0 mm X 48.0 mm

Stone Type:

Main Stone Color:

We have 6 Prs in stock as of
4/18/2025 4:20:09 PM

Style Code: E052-001

Approximate Weight 1.3 g

Description :

Hoop Earrings : YL : 2 gauge :
Round/Oval : Hollow Satin
DiaCut : Endless Closure : 14kt
Gold



Clasp: Endless Closure

Inside Diameter \$11.00

Size:

Dimensions: 15.0 mm X 15.0 mm

Stone Type:

Main Stone Color:

We have 0 Prs in stock as of
4/18/2025 4:20:09 PM



I.G.M. Corporation

Incas Gold Mine Corporation
650 South Hill Street Suite #218
Los Angeles, CA 90014
Tel: (213)627-8916 Fax: (213)627-1990
www.incasgoldmine.com email@incasgoldmine.com

Order by Fax or Email

Please include the **Style Code** and the quantity of each style and fax or email the order to us.
For an optional order form, please visit our website, www.incasgoldmine.com/forms

Fax: (213)627-1990 email: order@incasgoldmine.com

Some items are NOT to Scale. View the Dimensions for an accurate measurement.

Style Code: E052-004

Approximate Weight 1.8 g

Description :

Hoop Earrings : YL : 2 gauge :
Round/Oval : Hollow Satin
DiaCut : Endless Closure : 14kt
Gold



Clasp: Endless Closure

Inside Diameter \$22.00

Size:

Dimensions: 25.0 mm X 25.0 mm

Stone Type:

Main Stone Color:

We have 0 Prs in stock as of
4/18/2025 4:20:09 PM

Style Code: E052-005

Approximate Weight 2.4 g

Description :

Hoop Earrings : YL : 2.3
gauge : Round/Oval : Hollow
Satin DiaCut : Endless
Closure : 14kt Gold



Clasp: Endless Closure

Inside Diameter \$29.00

Size:

Dimensions: 32.0 mm X 32.0 mm

Stone Type:

Main Stone Color:

We have 0 Prs in stock as of
4/18/2025 4:20:09 PM

Style Code: E052-006

Approximate Weight 3.0 g

Description :

Hoop Earrings : YL : 2 gauge :
Round/Oval : Hollow Satin
DiaCut : Endless Closure : 14kt
Gold



Clasp: Endless Closure

Inside Diameter \$35.00

Size:

Dimensions: 39.0 mm X 39.0 mm

Stone Type:

Main Stone Color:

We have 0 Prs in stock as of
4/18/2025 4:20:09 PM

Style Code: E052-008

Approximate Weight 4.2 g

Description :

Hoop Earrings : YL : 2.3
gauge : Round/Oval : Hollow
Satin DiaCut : Endless
Closure : 14kt Gold



Clasp: Endless Closure

Inside Diameter \$50.00

Size:

Dimensions: 53.0 mm X 53.0 mm

Stone Type:

Main Stone Color:

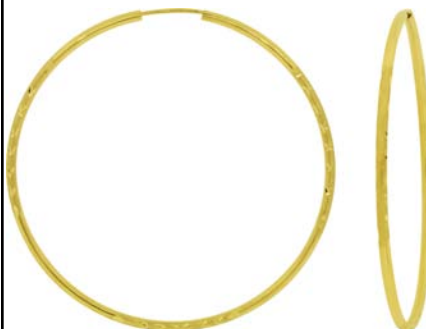
We have 0 Prs in stock as of
4/18/2025 4:20:09 PM

Style Code: E052-009

Approximate Weight 5.2 g

Description :

Hoop Earrings : YL : 2.3
gauge : Round/Oval : Hollow
Satin DiaCut : Endless
Closure : 14kt Gold



Clasp: Endless Closure

Inside Diameter \$62.00

Size:

Dimensions: 65.0 mm X 65.0 mm

Stone Type:

Main Stone Color:

We have 0 Prs in stock as of
4/18/2025 4:20:09 PM

Style Code: E053-001

Approximate Weight 1.2 g

Description :

Hoop Earrings : YL : 2 gauge :
Round/Oval : Hollow Plain :
Hinge Lock : 14kt Gold



Clasp: Hinge Lock

Inside Diameter \$10.00

Size:

Dimensions: 14.0 mm X 15.5 mm

Stone Type:

Main Stone Color:

We have 0 Prs in stock as of
4/18/2025 4:20:09 PM



I.G.M. Corporation

Incas Gold Mine Corporation

650 South Hill Street Suite #218

Los Angeles, CA 90014

Tel: (213)627-8916 Fax: (213)627-1990

www.incasgoldmine.com email@incasgoldmine.com

Order by Fax or Email

Please include the **Style Code** and the quantity of each style and fax or email the order to us.
For an optional order form, please visit our website, www.incasgoldmine.com/forms

Fax: (213)627-1990

email: order@incasgoldmine.com

Some items are NOT to Scale. View the Dimensions for an accurate measurement.

Style Code: E053-002

Approximate Weight 1.4 g

Description :

Hoop Earrings : YL : 2.2
gauge : Round/Oval : Hollow
Plain : Hinge Lock : 14kt Gold



Clasp: Hinge Lock

Inside Diameter \$14.00

Size:

Dimensions: 18.0 mm X 19.5 mm

Stone Type:

Main Stone Color:

We have 0 Prs in stock as of
4/18/2025 4:20:09 PM

Style Code: E053-004

Approximate Weight 1.7 g

Description :

Hoop Earrings : YL : 2 gauge :
Round/Oval : Hollow Plain :
Hinge Lock : 14kt Gold



Clasp: Hinge Lock

Inside Diameter \$25.00

Size:

Dimensions: 25.0 mm X 30.0 mm

Stone Type:

Main Stone Color:

We have 15 Prs in stock as of
4/18/2025 4:20:09 PM

Style Code: E053-005

Approximate Weight 3.0 g

Description :

Hoop Earrings : YL : 2 gauge :
Round/Oval : Hollow Plain :
Hinge Lock : 14kt Gold



Clasp: Hinge Lock

Inside Diameter \$30.00

Size:

Dimensions: 34.0 mm X 40.0 mm

Stone Type:

Main Stone Color:

We have 12 Prs in stock as of
4/18/2025 4:20:09 PM

Style Code: E053-006

Approximate Weight 3.3 g

Description :

Hoop Earrings : YL : 2.2
gauge : Round/Oval : Hollow
Plain : Hinge Lock : 14kt Gold



Clasp: Hinge Lock

Inside Diameter \$40.00

Size:

Dimensions: 42.0 mm X 45.0 mm

Stone Type:

Main Stone Color:

We have 4 Prs in stock as of
4/18/2025 4:20:09 PM

Style Code: E053-007

Approximate Weight 3.9 g

Description :

Hoop Earrings : YL : 2 gauge :
Round/Oval : Hollow Plain :
Hinge Lock : 14kt Gold



Clasp: Hinge Lock

Inside Diameter \$50.00

Size:

Dimensions: 59.0 mm X 57.0 mm

Stone Type:

Main Stone Color:

We have 7 Prs in stock as of
4/18/2025 4:20:09 PM

Style Code: E053-008

Approximate Weight 4.1 g

Description :

Hoop Earrings : YL : 2.2
gauge : Round/Oval : Hollow
Plain : Hinge Lock : 14kt Gold



Clasp: Hinge Lock

Inside Diameter \$61.00

Size:

Dimensions: 64.0 mm X 67.0 mm

Stone Type:

Main Stone Color:

We have 33 Prs in stock as of
4/18/2025 4:20:09 PM



I.G.M. Corporation

Incas Gold Mine Corporation

650 South Hill Street Suite #218

Los Angeles, CA 90014

Tel: (213)627-8916 Fax: (213)627-1990

www.incasgoldmine.com email@incasgoldmine.com

Order by Fax or Email

Please include the **Style Code** and the quantity of each style and fax or email the order to us.
For an optional order form, please visit our website, www.incasgoldmine.com/forms

Fax: (213)627-1990

email: order@incasgoldmine.com

Some items are NOT to Scale. View the Dimensions for an accurate measurement.

Style Code: E053-009

Approximate Weight 4.9 g

Description :

Hoop Earrings : YL : 2.2
gauge : Round/Oval : Hollow
Plain : Hinge Lock : 14kt Gold

Clasp: Hinge Lock

Inside Diameter \$70.00

Size:

Dimensions: 74.0 mm X 76.0 mm

Stone Type:

Main Stone Color:

We have 6 Prs in stock as of
4/18/2025 4:20:09 PM



Style Code: E053-051

Approximate Weight 1.2 g

Description :

Hoop Earrings : WT : 2.2
gauge : Round/Oval : Hollow
Plain : Hinge Lock : 14kt Gold

Clasp: Hinge Lock

Inside Diameter \$11.00

Size:

Dimensions: 14.0 mm X 15.5 mm

Stone Type:

Main Stone Color:

We have 1 Prs in stock as of
4/18/2025 4:20:09 PM



Style Code: E053-052

Approximate Weight 1.5 g

Description :

Hoop Earrings : WT : 2.2
gauge : Round/Oval : Hollow
Plain : Hinge Lock : 14kt Gold

Clasp: Hinge Lock

Inside Diameter \$15.00

Size:

Dimensions: 19.0 mm X 20.0 mm

Stone Type:

Main Stone Color:

We have 0 Prs in stock as of
4/18/2025 4:20:09 PM



Style Code: E053-054

Approximate Weight 2.2 g

Description :

Hoop Earrings : WT : 2.2
gauge : Round/Oval : Hollow
Plain : Hinge Lock : 14kt Gold

Clasp: Hinge Lock

Inside Diameter \$22.00

Size:

Dimensions: 26.0 mm X 27.5 mm

Stone Type:

Main Stone Color:

We have 0 Prs in stock as of
4/18/2025 4:20:09 PM



Style Code: E053-055

Approximate Weight 2.6 g

Description :

Hoop Earrings : WT : 2.2
gauge : Round/Oval : Hollow
Plain : Hinge Lock : 14kt Gold

Clasp: Hinge Lock

Inside Diameter \$28.00

Size:

Dimensions: 32.0 mm X 33.5 mm

Stone Type:

Main Stone Color:

We have 0 Prs in stock as of
4/18/2025 4:20:09 PM



Style Code: E053-056

Approximate Weight 3.5 g

Description :

Hoop Earrings : WT : 2.2
gauge : Round/Oval : Hollow
Plain : Hinge Lock : 14kt Gold

Clasp: Hinge Lock

Inside Diameter \$36.00

Size:

Dimensions: 40.5 mm X 42.0 mm

Stone Type:

Main Stone Color:

We have 0 Prs in stock as of
4/18/2025 4:20:09 PM





I.G.M. Corporation

Incas Gold Mine Corporation

650 South Hill Street Suite #218

Los Angeles, CA 90014

Tel: (213)627-8916 Fax: (213)627-1990

www.incasgoldmine.com email@incasgoldmine.com

Order by Fax or Email

Please include the **Style Code** and the quantity of each style and fax or email the order to us.
For an optional order form, please visit our website, www.incasgoldmine.com/forms

Fax: (213)627-1990

email: order@incasgoldmine.com

Some items are NOT to Scale. View the Dimensions for an accurate measurement.

Style Code: E053-057

Approximate Weight 4.2 g

Description :

Hoop Earrings : WT : 2.2
gauge : Round/Oval : Hollow
Plain : Hinge Lock : 14kt Gold

Clasp: Hinge Lock

Inside Diameter \$50.00

Size:

Dimensions: 53.0 mm X 55.0 mm

Stone Type:

Main Stone Color:

We have 0 Prs in stock as of
4/18/2025 4:20:09 PM



Style Code: E053-058

Approximate Weight 5.7 g

Description :

Hoop Earrings : WT : 2.2
gauge : Round/Oval : Hollow
Plain : Hinge Lock : 14kt Gold

Clasp: Hinge Lock

Inside Diameter \$62.00

Size:

Dimensions: 67.0 mm X 68.5 mm

Stone Type:

Main Stone Color:

We have 0 Prs in stock as of
4/18/2025 4:20:09 PM



Style Code: E053-059

Approximate Weight 6.3 g

Description :

Hoop Earrings : WT : 2.2
gauge : Round/Oval : Hollow
Plain : Hinge Lock : 14kt Gold

Clasp: Hinge Lock

Inside Diameter \$70.00

Size:

Dimensions: 74.0 mm X 76.5 mm

Stone Type:

Main Stone Color:

We have 0 Prs in stock as of
4/18/2025 4:20:09 PM



Style Code: E054-001

Approximate Weight 1.2 g

Description :

Hoop Earrings : YL : 2 gauge :
Round/Oval : Hollow Satin
DiaCut : Hinge Lock : 14kt
Gold

Clasp: Hinge Lock

Inside Diameter \$12.00

Size:

Dimensions: 14.0 mm X 15.5 mm

Stone Type:

Main Stone Color:

We have 15 Prs in stock as of
4/18/2025 4:20:09 PM



Style Code: E054-002

Approximate Weight 1.4 g

Description :

Hoop Earrings : YL : 2 gauge :
Round/Oval : Hollow Satin
DiaCut : Hinge Lock : 14kt
Gold

Clasp: Hinge Lock

Inside Diameter \$14.20

Size:

Dimensions: 17.5 mm X 19.0 mm

Stone Type:

Main Stone Color:

We have 5 Prs in stock as of
4/18/2025 4:20:09 PM



Style Code: E054-004

Approximate Weight 1.7 g

Description :

Hoop Earrings : YL : 2 gauge :
Round/Oval : Hollow Satin
DiaCut : Hinge Lock : 14kt
Gold

Clasp: Hinge Lock

Inside Diameter \$21.40

Size:

Dimensions: 25.0 mm X 28.0 mm

Stone Type:

Main Stone Color:

We have 0 Prs in stock as of
4/18/2025 4:20:09 PM





I.G.M. Corporation

Incas Gold Mine Corporation
650 South Hill Street Suite #218
Los Angeles, CA 90014
Tel: (213)627-8916 Fax: (213)627-1990
www.incasgoldmine.com email@incasgoldmine.com

Order by Fax or Email

Please include the **Style Code** and the quantity of each style and fax or email the order to us.
For an optional order form, please visit our website, www.incasgoldmine.com/forms

Fax: (213)627-1990 email: order@incasgoldmine.com

Some items are NOT to Scale. View the Dimensions for an accurate measurement.

Style Code: E054-005

Approximate Weight 2.5 g

Description :

Hoop Earrings : YL : 2.2
gauge : Round/Oval : Hollow
Satin DiaCut : Hinge Lock :
14kt Gold



Clasp: Hinge Lock

Inside Diameter \$27.00

Size:

Dimensions: 30.5 mm X 33.0 mm

Stone Type:

Main Stone Color:

We have 0 Prs in stock as of
4/18/2025 4:20:09 PM

Style Code: E054-006

Approximate Weight 2.9 g

Description :

Hoop Earrings : YL : 2.5
gauge : Round/Oval : Hollow
Satin DiaCut : Hinge Lock :
14kt Gold



Clasp: Hinge Lock

Inside Diameter \$33.50

Size:

Dimensions: 37.0 mm X 40.0 mm

Stone Type:

Main Stone Color:

We have 0 Prs in stock as of
4/18/2025 4:20:09 PM

Style Code: E054-007

Approximate Weight 3.5 g

Description :

Hoop Earrings : YL : 2 gauge :
Round/Oval : Hollow Satin
DiaCut : Hinge Lock : 14kt
Gold



Clasp: Hinge Lock

Inside Diameter \$42.00

Size:

Dimensions: 46.0 mm X 49.0 mm

Stone Type:

Main Stone Color:

We have 0 Prs in stock as of
4/18/2025 4:20:09 PM

Style Code: E054-008

Approximate Weight 4.1 g

Description :

Hoop Earrings : YL : 2 gauge :
Round/Oval : Hollow Satin
DiaCut : Hinge Lock : 14kt
Gold



Clasp: Hinge Lock

Inside Diameter \$51.00

Size:

Dimensions: 54.0 mm X 58.0 mm

Stone Type:

Main Stone Color:

We have 0 Prs in stock as of
4/18/2025 4:20:09 PM

Style Code: E054-009

Approximate Weight 5.2 g

Description :

Hoop Earrings : YL : 2.3
gauge : Round/Oval : Hollow
Satin DiaCut : Hinge Lock :
14kt Gold



Clasp: Hinge Lock

Inside Diameter \$61.00

Size:

Dimensions: 64.7 mm X 67.2 mm

Stone Type:

Main Stone Color:

We have 0 Prs in stock as of
4/18/2025 4:20:09 PM

Style Code: E055-002

Approximate Weight 2.6 g

Description :

Hoop Earrings : YL : 3 gauge :
Round/Oval : Hollow Satin
DiaCut : Hinge Lock : 14kt
Gold



Clasp: Hinge Lock

Inside Diameter \$16.00

Size:

Dimensions: 21.5 mm X 24.0 mm

Stone Type:

Main Stone Color:

We have 2 Prs in stock as of
4/18/2025 4:20:09 PM



I.G.M. Corporation

Incas Gold Mine Corporation

650 South Hill Street Suite #218

Los Angeles, CA 90014

Tel: (213)627-8916 Fax: (213)627-1990

www.incasgoldmine.com email@incasgoldmine.com

Order by Fax or Email

Please include the **Style Code** and the quantity of each style and fax or email the order to us.
For an optional order form, please visit our website, www.incasgoldmine.com/forms

Fax: (213)627-1990

email: order@incasgoldmine.com

Some items are NOT to Scale. View the Dimensions for an accurate measurement.

Style Code: E056-051

Approximate Weight 1.5 g

Description :

Hoop Earrings : WT : 3
gauge : Triangle/other :
Machine Rolled Plain : Hinge
Lock : CZ White (Apr) : 14kt
Gold



Clasp: Hinge Lock

Inside Diameter \$9.00

Size:

Dimensions: 13.0 mm X 13.5 mm

Stone Type: CZ

Main Stone Color: White (Apr)

We have 12 Prs in stock as of

4/18/2025 4:20:09 PM

Style Code: E056-052

Approximate Weight 2.4 g

Description :

Hoop Earrings : WT : 3
gauge : Triangle/other :
Machine Rolled Plain : Hinge
Lock : CZ White (Apr) : 14kt
Gold



Clasp: Hinge Lock

Inside Diameter \$11.00

Size:

Dimensions: 16.0 mm X 18.0 mm

Stone Type: CZ

Main Stone Color: White (Apr)

We have 7 Prs in stock as of

4/18/2025 4:20:09 PM

Style Code: E056-053

Approximate Weight 3.1 g

Description :

Hoop Earrings : WT : 3
gauge : Triangle/other :
Machine Rolled Plain : Hinge
Lock : CZ White (Apr) : 14kt
Gold



Clasp: Hinge Lock

Inside Diameter \$16.00

Size:

Dimensions: 20.5 mm X 23.0 mm

Stone Type: CZ

Main Stone Color: White (Apr)

We have 5 Prs in stock as of

4/18/2025 4:20:09 PM

Style Code: E056-055

Approximate Weight 4.7 g

Description :

Hoop Earrings : WT : 3
gauge : Triangle/other :
Machine Rolled Plain : Hinge
Lock : CZ White (Apr) : 14kt
Gold



Clasp: Hinge Lock

Inside Diameter \$27.00

Size:

Dimensions: 32.0 mm X 35.0 mm

Stone Type: CZ

Main Stone Color: White (Apr)

We have 4 Prs in stock as of

4/18/2025 4:20:09 PM

Style Code: E056-056

Approximate Weight 5.8 g

Description :

Hoop Earrings : WT : 3
gauge : Triangle/other :
Machine Rolled Plain : Hinge
Lock : CZ White (Apr) : 14kt
Gold



Clasp: Hinge Lock

Inside Diameter \$32.00

Size:

Dimensions: 37.0 mm X 40.0 mm

Stone Type: CZ

Main Stone Color: White (Apr)

We have 8 Prs in stock as of

4/18/2025 4:20:09 PM

Style Code: E057-001

Approximate Weight 2.3 g

Description :

Hoop Earrings : YL : 3 gauge :
Hollow Plain : Hinge Lock :
14kt Gold



Clasp: Hinge Lock

Inside Diameter \$14.00

Size:

Dimensions: 18.5 mm X 20.0 mm

Stone Type:

Main Stone Color:

We have 0 Prs in stock as of

4/18/2025 4:20:09 PM



I.G.M. Corporation

Incas Gold Mine Corporation

650 South Hill Street Suite #218

Los Angeles, CA 90014

Tel: (213)627-8916 Fax: (213)627-1990

www.incasgoldmine.com email@incasgoldmine.com

Order by Fax or Email

Please include the **Style Code** and the quantity of each style and fax or email the order to us.
For an optional order form, please visit our website, www.incasgoldmine.com/forms

Fax: (213)627-1990

email: order@incasgoldmine.com

Some items are NOT to Scale. View the Dimensions for an accurate measurement.

Style Code: E057-002

Approximate Weight 2.4 g

Description :

Hoop Earrings : YL : 3 gauge :
Hollow Plain : Hinge Lock :
14kt Gold



Clasp: Hinge Lock

Inside Diameter \$16.00

Size:

Dimensions: 21.5 mm X 23.0 mm

Stone Type:

Main Stone Color:

We have 0 Prs in stock as of
4/18/2025 4:20:09 PM

Style Code: E057-004

Approximate Weight 3.4 g

Description :

Hoop Earrings : YL : 3 gauge :
Hollow Plain : Hinge Lock :
14kt Gold



Clasp: Hinge Lock

Inside Diameter \$27.00

Size:

Dimensions: 32.0 mm X 34.0 mm

Stone Type:

Main Stone Color:

We have 0 Prs in stock as of
4/18/2025 4:20:09 PM

Style Code: E057-007

Approximate Weight 6.6 g

Description :

Hoop Earrings : YL : 3 gauge :
Hollow Plain : Hinge Lock :
14kt Gold



Clasp: Hinge Lock

Inside Diameter \$48.00

Size:

Dimensions: 52.0 mm X 54.0 mm

Stone Type:

Main Stone Color:

We have 0 Prs in stock as of
4/18/2025 4:20:09 PM

Style Code: E057-009

Approximate Weight 8.3 g

Description :

Hoop Earrings : YL : 3 gauge :
Hollow Plain : Hinge Lock :
14kt Gold



Clasp: Hinge Lock

Inside Diameter \$66.00

Size:

Dimensions: 71.0 mm X 73.0 mm

Stone Type:

Main Stone Color:

We have 0 Prs in stock as of
4/18/2025 4:20:09 PM

Style Code: E057-051

Approximate Weight 2.2 g

Description :

Hoop Earrings : WT : 3
gauge : Hollow Plain : Hinge
Lock : 14kt Gold



Clasp: Hinge Lock

Inside Diameter \$14.00

Size:

Dimensions: 19.0 mm X 20.5 mm

Stone Type:

Main Stone Color:

We have 0 Prs in stock as of
4/18/2025 4:20:09 PM

Style Code: E057-053

Approximate Weight 3.7 g

Description :

Hoop Earrings : WT : 3
gauge : Hollow Plain : Hinge
Lock : 14kt Gold



Clasp: Hinge Lock

Inside Diameter \$19.00

Size:

Dimensions: 25.0 mm X 26.5 mm

Stone Type:

Main Stone Color:

We have 2 Prs in stock as of
4/18/2025 4:20:09 PM



I.G.M. Corporation

Incas Gold Mine Corporation

650 South Hill Street Suite #218

Los Angeles, CA 90014

Tel: (213)627-8916 Fax: (213)627-1990

www.incasgoldmine.com email@incasgoldmine.com

Order by Fax or Email

Please include the **Style Code** and the quantity of each style and fax or email the order to us.
For an optional order form, please visit our website, www.incasgoldmine.com/forms

Fax: (213)627-1990

email: order@incasgoldmine.com

Some items are NOT to Scale. View the Dimensions for an accurate measurement.

Style Code: E057-058

Approximate Weight 7.5 g

Description :

Hoop Earrings : WT : 3
gauge : Hollow Plain : Hinge
Lock : 14kt Gold

Clasp: Hinge Lock

Inside Diameter \$60.00

Size:

Dimensions: 64.5 mm X 66.5 mm

Stone Type:

Main Stone Color:

We have 0 Prs in stock as of
4/18/2025 4:20:09 PM



Style Code: E058-001

Approximate Weight 2.0 g

Description :

Hoop Earrings : YL : 3 gauge :
Round/Oval : Hollow Satin
DiaCut : Hinge Lock : 14kt
Gold

Clasp: Hinge Lock

Inside Diameter \$14.00

Size:

Dimensions: 18.5 mm X 20.0 mm

Stone Type:

Main Stone Color:

We have 7 Prs in stock as of
4/18/2025 4:20:09 PM



Style Code: E058-002

Approximate Weight 2.3 g

Description :

Hoop Earrings : YL : 3 gauge :
Round/Oval : Hollow Satin
DiaCut : Hinge Lock : 14kt
Gold

Clasp: Hinge Lock

Inside Diameter \$16.00

Size:

Dimensions: 21.5 mm X 23.0 mm

Stone Type:

Main Stone Color:

We have 0 Prs in stock as of
4/18/2025 4:20:09 PM



Style Code: E058-003

Approximate Weight 2.7 g

Description :

Hoop Earrings : YL : 3 gauge :
Round/Oval : Hollow Satin
DiaCut : Hinge Lock : 14kt
Gold

Clasp: Hinge Lock

Inside Diameter \$20.00

Size:

Dimensions: 25.0 mm X 27.0 mm

Stone Type:

Main Stone Color:

We have 0 Prs in stock as of
4/18/2025 4:20:09 PM



Style Code: E058-005

Approximate Weight 4.7 g

Description :

Hoop Earrings : YL : 3 gauge :
Round/Oval : Hollow Satin
DiaCut : Hinge Lock : 14kt
Gold

Clasp: Hinge Lock

Inside Diameter \$35.00

Size:

Dimensions: 40.0 mm X 42.0 mm

Stone Type:

Main Stone Color:

We have 0 Prs in stock as of
4/18/2025 4:20:09 PM



Style Code: E058-006

Approximate Weight 5.0 g

Description :

Hoop Earrings : YL : 3 gauge :
Round/Oval : Hollow Satin
DiaCut : Hinge Lock : 14kt
Gold

Clasp: Hinge Lock

Inside Diameter \$40.00

Size:

Dimensions: 45.5 mm X 48.0 mm

Stone Type:

Main Stone Color:

We have 0 Prs in stock as of
4/18/2025 4:20:09 PM





I.G.M. Corporation

Incas Gold Mine Corporation
650 South Hill Street Suite #218
Los Angeles, CA 90014
Tel: (213)627-8916 Fax: (213)627-1990
www.incasgoldmine.com email@incasgoldmine.com

Order by Fax or Email

Please include the **Style Code** and the quantity of each style and fax or email the order to us.
For an optional order form, please visit our website, www.incasgoldmine.com/forms

Fax: (213)627-1990

email: order@incasgoldmine.com

Some items are NOT to Scale. View the Dimensions for an accurate measurement.

Style Code: E058-007

Approximate Weight 7.1 g

Description :

Hoop Earrings : YL : 3 gauge :
Round/Oval : Hollow Satin
DiaCut : Hinge Lock : 14kt
Gold

Clasp: Hinge Lock

Inside Diameter \$57.00

Size:

Dimensions: 62.0 mm X 64.0 mm

Stone Type:

Main Stone Color:



We have 0 Prs in stock as of
4/18/2025 4:20:09 PM

Style Code: E059-006

Approximate Weight 2.0 g

Description :

Hoop Earrings : YL : 2.5
gauge : Round/Oval : Hollow
Plain : Endless Closure : 14kt
Gold

Clasp: Endless Closure

Inside Diameter \$31.00

Size:

Dimensions: 35.0 mm X 35.0 mm

Stone Type:

Main Stone Color:



We have 1 Prs in stock as of
4/18/2025 4:20:09 PM

Style Code: E061-001

Approximate Weight 1.9 g

Description :

Hoop Earrings : YL : 2 gauge :
Square/Rectangle : Hollow
Plain : Hinge Lock : 14kt Gold

Clasp: Hinge Lock

Inside Diameter \$15.00

Size:

Dimensions: 19.0 mm X 20.0 mm

Stone Type:

Main Stone Color:



We have 0 Prs in stock as of
4/18/2025 4:20:09 PM

Style Code: E061-002

Approximate Weight 2.5 g

Description :

Hoop Earrings : YL : 2 gauge :
Square/Rectangle : Hollow
Plain : Hinge Lock : 14kt Gold

Clasp: Hinge Lock

Inside Diameter \$20.00

Size:

Dimensions: 24.0 mm X 26.0 mm

Stone Type:

Main Stone Color:



We have 0 Prs in stock as of
4/18/2025 4:20:09 PM

Style Code: E061-004

Approximate Weight 3.4 g

Description :

Hoop Earrings : YL : 2 gauge :
Square/Rectangle : Hollow
Plain : Hinge Lock : 14kt Gold

Clasp: Hinge Lock

Inside Diameter \$29.00

Size:

Dimensions: 32.0 mm X 34.0 mm

Stone Type:

Main Stone Color:



We have 0 Prs in stock as of
4/18/2025 4:20:09 PM

Style Code: E061-051

Approximate Weight 2.1 g

Description :

Hoop Earrings : WT : 2
gauge : Square/Rectangle :
Hollow Plain : Hinge Lock :
14kt Gold

Clasp: Hinge Lock

Inside Diameter \$15.00

Size:

Dimensions: 19.0 mm X 20.0 mm

Stone Type:

Main Stone Color:



We have 2 Prs in stock as of
4/18/2025 4:20:09 PM



I.G.M. Corporation

Incas Gold Mine Corporation

650 South Hill Street Suite #218

Los Angeles, CA 90014

Tel: (213)627-8916 Fax: (213)627-1990

www.incasgoldmine.com email@incasgoldmine.com

Order by Fax or Email

Please include the **Style Code** and the quantity of each style and fax or email the order to us.
For an optional order form, please visit our website, www.incasgoldmine.com/forms

Fax: (213)627-1990

email: order@incasgoldmine.com

Some items are NOT to Scale. View the Dimensions for an accurate measurement.

Style Code: E061-052

Approximate Weight 2.7 g

Description :

Hoop Earrings : WT : 2
gauge : Square/Rectangle :
Hollow Plain : Hinge Lock :
14kt Gold



Clasp: Hinge Lock

Inside Diameter \$20.00

Size:

Dimensions: 24.0 mm X 25.5 mm

Stone Type:

Main Stone Color:

We have 10 Prs in stock as of

4/18/2025 4:20:09 PM

Style Code: E061-053

Approximate Weight 3.3 g

Description :

Hoop Earrings : WT : 2
gauge : Square/Rectangle :
Hollow Plain : Hinge Lock :
14kt Gold



Clasp: Hinge Lock

Inside Diameter \$25.00

Size:

Dimensions: 29.0 mm X 31.0 mm

Stone Type:

Main Stone Color:

We have 1 Prs in stock as of

4/18/2025 4:20:09 PM

Style Code: E061-054

Approximate Weight 3.8 g

Description :

Hoop Earrings : WT : 2
gauge : Square/Rectangle :
Hollow Plain : Hinge Lock :
14kt Gold



Clasp: Hinge Lock

Inside Diameter \$28.00

Size:

Dimensions: 32.0 mm X 34.0 mm

Stone Type:

Main Stone Color:

We have 4 Prs in stock as of

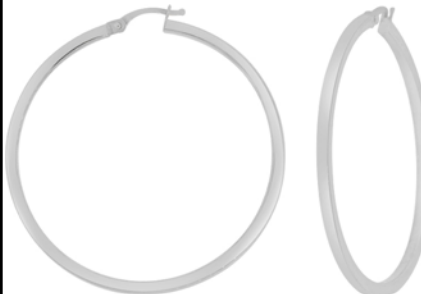
4/18/2025 4:20:09 PM

Style Code: E061-056

Approximate Weight 4.9 g

Description :

Hoop Earrings : WT : 2
gauge : Square/Rectangle :
Hollow Plain : Hinge Lock :
14kt Gold



Clasp: Hinge Lock

Inside Diameter \$41.00

Size:

Dimensions: 45.0 mm X 47.0 mm

Stone Type:

Main Stone Color:

We have 5 Prs in stock as of

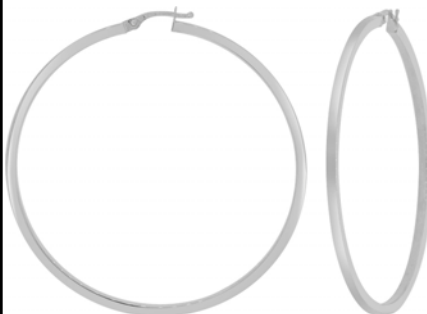
4/18/2025 4:20:09 PM

Style Code: E061-057

Approximate Weight 6.0 g

Description :

Hoop Earrings : WT : 2
gauge : Square/Rectangle :
Hollow Plain : Hinge Lock :
14kt Gold



Clasp: Hinge Lock

Inside Diameter \$50.00

Size:

Dimensions: 54.0 mm X 55.0 mm

Stone Type:

Main Stone Color:

We have 2 Prs in stock as of

4/18/2025 4:20:09 PM

Style Code: E062-051

Approximate Weight 3.0 g

Description :

Hoop Earrings : WT : 3
gauge : Square/Rectangle :
Hollow Plain : Hinge Lock :
14kt Gold



Clasp: Hinge Lock

Inside Diameter \$20.00

Size:

Dimensions: 26.0 mm X 28.0 mm

Stone Type:

Main Stone Color:

We have 6 Prs in stock as of

4/18/2025 4:20:09 PM



I.G.M. Corporation

Incas Gold Mine Corporation
650 South Hill Street Suite #218
Los Angeles, CA 90014
Tel: (213)627-8916 Fax: (213)627-1990
www.incasgoldmine.com email@incasgoldmine.com

Order by Fax or Email

Please include the **Style Code** and the quantity of each style and fax or email the order to us.
For an optional order form, please visit our website, www.incasgoldmine.com/forms

Fax: (213)627-1990 email: order@incasgoldmine.com

Some items are NOT to Scale. View the Dimensions for an accurate measurement.

Style Code: E062-052

Approximate Weight 4.1 g

Description :

Hoop Earrings : WT : 3
gauge : Square/Rectangle :
Hollow Plain : Hinge Lock :
14kt Gold

Clasp: Hinge Lock

Inside Diameter \$31.00

Size:

Dimensions: 36.5 mm X 38.0 mm

Stone Type:

Main Stone Color:

We have 2 Prs in stock as of

4/18/2025 4:20:09 PM



Style Code: E062-054

Approximate Weight 7.0 g

Description :

Hoop Earrings : WT : 3
gauge : Square/Rectangle :
Hollow Plain : Hinge Lock :
14kt Gold

Clasp: Hinge Lock

Inside Diameter \$51.00

Size:

Dimensions: 57.0 mm X 59.0 mm

Stone Type:

Main Stone Color:

We have 2 Prs in stock as of

4/18/2025 4:20:09 PM



Style Code: E063-004

Approximate Weight 3.2 g

Description :

Hoop Earrings : YL : 4 gauge :
Lines Horizontal design :
Square/Rectangle : Hollow
DiaCut : Hinge Lock : 14kt
Gold

Clasp: Hinge Lock

Inside Diameter \$20.00

Size:

Dimensions: 24.5 mm X 25.5 mm

Stone Type:

Main Stone Color:

We have 0 Prs in stock as of

4/18/2025 4:20:09 PM



Style Code: E063-005

Approximate Weight 4.5 g

Description :

Hoop Earrings : YL : 4 gauge :
Lines Horizontal design :
Square/Rectangle : Hollow
DiaCut : Hinge Lock : 14kt
Gold

Clasp: Hinge Lock

Inside Diameter \$30.00

Size:

Dimensions: 34.0 mm X 35.0 mm

Stone Type:

Main Stone Color:

We have 0 Prs in stock as of

4/18/2025 4:20:09 PM



Style Code: E063-006

Approximate Weight 6.4 g

Description :

Hoop Earrings : YL : 4 gauge :
Lines Horizontal design :
Square/Rectangle : Hollow
DiaCut : Hinge Lock : 14kt
Gold

Clasp: Hinge Lock

Inside Diameter \$40.00

Size:

Dimensions: 44.0 mm X 45.0 mm

Stone Type:

Main Stone Color:

We have 4 Prs in stock as of

4/18/2025 4:20:09 PM



Style Code: E063-007

Approximate Weight 7.7 g

Description :

Hoop Earrings : YL : 4 gauge :
Lines Horizontal design :
Square/Rectangle : Hollow
DiaCut : Hinge Lock : 14kt
Gold

Clasp: Hinge Lock

Inside Diameter \$48.00

Size:

Dimensions: 52.5 mm X 54.0 mm

Stone Type:

Main Stone Color:

We have 0 Prs in stock as of

4/18/2025 4:20:09 PM





I.G.M. Corporation

Incas Gold Mine Corporation

650 South Hill Street Suite #218

Los Angeles, CA 90014

Tel: (213)627-8916 Fax: (213)627-1990

www.incasgoldmine.com email@incasgoldmine.com

Order by Fax or Email

Please include the **Style Code** and the quantity of each style and fax or email the order to us.
For an optional order form, please visit our website, www.incasgoldmine.com/forms

Fax: (213)627-1990

email: order@incasgoldmine.com

Some items are NOT to Scale. View the Dimensions for an accurate measurement.

Style Code: E063-051

Approximate Weight 2.7 g

Description :

Hoop Earrings : WT : 2.5
gauge : Square/Rectangle :
Hollow Satin : Hinge Lock :
14kt Gold



Clasp: Hinge Lock

Inside Diameter \$26.00

Size:

Dimensions: 33.0 mm X 35.0 mm

Stone Type:

Main Stone Color:

We have 2 Prs in stock as of

4/18/2025 4:20:09 PM

Style Code: E065-003

Approximate Weight 5.5 g

Description :

Hoop Earrings : TC : 2 gauge :
15 or 15 Anos Flower design :
Round/Oval : Hollow Plain
DiaCut : Hinge Lock : 14kt
Gold



Clasp: Hinge Lock

Inside Diameter \$36.00

Size:

Dimensions: 40.0 mm X 44.0 mm

Stone Type:

Main Stone Color:

We have 2 Prs in stock as of

4/18/2025 4:20:09 PM

Style Code: E065-006

Approximate Weight 4.2 g

Description :

Hoop Earrings : YL : 2 gauge :
Dolphin design : Round/Oval :
Hollow Plain : Hinge Lock :
14kt Gold



Clasp: Hinge Lock

Inside Diameter \$35.00

Size:

Dimensions: 39.0 mm X 41.0 mm

Stone Type:

Main Stone Color:

We have 3 Prs in stock as of

4/18/2025 4:20:09 PM

Style Code: E067-001

Approximate Weight 1.0 g

Description :

Hoop Earrings : YL : 1.70
gauge : Faceted design :
Round/Oval : Hollow Plain :
Endless Closure : 14kt Gold



Clasp: Endless Closure

Inside Diameter \$13.00

Size:

Dimensions: 16.0 mm X 16.0 mm

Stone Type:

Main Stone Color:

We have 1 Prs in stock as of

4/18/2025 4:20:09 PM

Style Code: E067-002

Approximate Weight 1.4 g

Description :

Hoop Earrings : YL : 1.70
gauge : Faceted design :
Round/Oval : Hollow Plain :
Endless Closure : 14kt Gold



Clasp: Endless Closure

Inside Diameter \$19.00

Size:

Dimensions: 22.0 mm X 22.5 mm

Stone Type:

Main Stone Color:

We have 14 Prs in stock as of

4/18/2025 4:20:09 PM

Style Code: E067-003

Approximate Weight 1.9 g

Description :

Hoop Earrings : YL : 1.7
gauge : Faceted design :
Round/Oval : Hollow Plain :
Endless Closure : 14kt Gold



Clasp: Endless Closure

Inside Diameter \$28.00

Size:

Dimensions: 30.0 mm X 34.0 mm

Stone Type:

Main Stone Color:

We have 20 Prs in stock as of

4/18/2025 4:20:09 PM



I.G.M. Corporation

Incas Gold Mine Corporation

650 South Hill Street Suite #218

Los Angeles, CA 90014

Tel: (213)627-8916 Fax: (213)627-1990

www.incasgoldmine.com email@incasgoldmine.com

Order by Fax or Email

Please include the **Style Code** and the quantity of each style and fax or email the order to us.
For an optional order form, please visit our website, www.incasgoldmine.com/forms

Fax: (213)627-1990

email: order@incasgoldmine.com

Some items are NOT to Scale. View the Dimensions for an accurate measurement.

Style Code: E067-004

Approximate Weight 2.9 g

Description :

Hoop Earrings : YL : 1.70
gauge : Faceted design :
Round/Oval : Hollow Plain :
Endless Closure : 14kt Gold

Clasp: Endless Closure

Inside Diameter \$40.00

Size:

Dimensions: 42.0 mm X 45.0 mm

Stone Type:

Main Stone Color:

We have 8 Prs in stock as of
4/18/2025 4:20:09 PM

Style Code: E067-006

Approximate Weight 3.9 g

Description :

Hoop Earrings : YL : 1.5
gauge : Faceted design :
Round/Oval : Hollow Plain :
Endless Closure : 14kt Gold

Clasp: Endless Closure

Inside Diameter \$60.00

Size:

Dimensions: 63.0 mm X 68.0 mm

Stone Type:

Main Stone Color:

We have 11 Prs in stock as of
4/18/2025 4:20:09 PM

Style Code: E067-051

Approximate Weight 0.8 g

Description :

Hoop Earrings : WT : 1.5
gauge : Faceted design :
Round/Oval : Hollow Plain :
Endless Closure : 14kt Gold

Clasp: Endless Closure

Inside Diameter \$12.00

Size:

Dimensions: 15.0 mm X 18.0 mm

Stone Type:

Main Stone Color:

We have 53 Prs in stock as of
4/18/2025 4:20:09 PM

Style Code: E067-005

Approximate Weight 3.1 g

Description :

Hoop Earrings : YL : 1.5
gauge : Faceted design :
Round/Oval : Hollow Plain :
Endless Closure : 14kt Gold

Clasp: Endless Closure

Inside Diameter \$50.00

Size:

Dimensions: 54.0 mm X 58.0 mm

Stone Type:

Main Stone Color:

We have 7 Prs in stock as of
4/18/2025 4:20:09 PM

Style Code: E067-007

Approximate Weight 4.0 g

Description :

Hoop Earrings : YL : 1.5
gauge : Faceted design :
Round/Oval : Hollow Plain :
Endless Closure : 14kt Gold

Clasp: Endless Closure

Inside Diameter \$70.00

Size:

Dimensions: 73.0 mm X 68.0 mm

Stone Type:

Main Stone Color:

We have 0 Prs in stock as of
4/18/2025 4:20:09 PM

Style Code: E069-001

Approximate Weight 1.4 g

Description :

Hoop Earrings : YW : 1.5
gauge : Lines Diagonal design :
Round/Oval : Hollow Satin
DiaCut : Hinge Lock : 14kt
Gold

Clasp: Hinge Lock

Inside Diameter \$15.00

Size:

Dimensions: 18.0 mm X 20.0 mm

Stone Type:

Main Stone Color:

We have 9 Prs in stock as of
4/18/2025 4:20:09 PM



I.G.M. Corporation

Incas Gold Mine Corporation
650 South Hill Street Suite #218
Los Angeles, CA 90014
Tel: (213)627-8916 Fax: (213)627-1990
www.incasgoldmine.com email@incasgoldmine.com

Order by Fax or Email

Please include the **Style Code** and the quantity of each style and fax or email the order to us.
For an optional order form, please visit our website, www.incasgoldmine.com/forms

Fax: (213)627-1990

email: order@incasgoldmine.com

Some items are NOT to Scale. View the Dimensions for an accurate measurement.

Style Code: E069-002

Approximate Weight 1.7 g

Description :

Hoop Earrings : YW : 1.5
gauge : Lines Diagonal design :
Round/Oval : Hollow Satin
DiaCut : Hinge Lock : 14kt
Gold



Clasp: Hinge Lock

Inside Diameter \$20.00

Size:

Dimensions: 23.0 mm X 24.0 mm

Stone Type:

Main Stone Color:

We have 13 Prs in stock as of

4/18/2025 4:20:09 PM

Style Code: E069-003

Approximate Weight 2.4 g

Description :

Hoop Earrings : YW : 1.5
gauge : Lines Diagonal design :
Round/Oval : Hollow Satin
DiaCut : Hinge Lock : 14kt
Gold



Clasp: Hinge Lock

Inside Diameter \$30.00

Size:

Dimensions: 33.0 mm X 34.0 mm

Stone Type:

Main Stone Color:

We have 2 Prs in stock as of

4/18/2025 4:20:09 PM

Style Code: E069-004

Approximate Weight 3.3 g

Description :

Hoop Earrings : YW : 1.5
gauge : Lines Diagonal design :
Round/Oval : Hollow Satin
DiaCut : Hinge Lock : 14kt
Gold



Clasp: Hinge Lock

Inside Diameter \$41.00

Size:

Dimensions: 44.0 mm X 46.0 mm

Stone Type:

Main Stone Color:

We have 3 Prs in stock as of

4/18/2025 4:20:09 PM

Style Code: E069-053

Approximate Weight 2.5 g

Description :

Hoop Earrings : WR : 1.5
gauge : Lines Diagonal design :
Round/Oval : Hollow Satin
DiaCut : Hinge Lock : 14kt
Gold



Clasp: Hinge Lock

Inside Diameter \$31.00

Size:

Dimensions: 34.0 mm X 35.5 mm

Stone Type:

Main Stone Color:

We have 2 Prs in stock as of

4/18/2025 4:20:09 PM

Style Code: E070-007

Approximate Weight 2.9 g

Description :

Hoop Earrings : YW : 4
gauge : Round/Oval : Hollow
Plain : Hinge Lock : 14kt Gold



Clasp: Hinge Lock

Inside Diameter \$20.00

Size:

Dimensions: 24.0 mm X 25.0 mm

Stone Type:

Main Stone Color:

We have 3 Prs in stock as of

4/18/2025 4:20:09 PM

Style Code: E070-016

Approximate Weight 1.8 g

Description :

Hoop Earrings : YW : 2
gauge : Lines Diagonal design :
Round/Oval : Hollow DiaCut :
Hinge Lock : 14kt Gold



Clasp: Hinge Lock

Inside Diameter \$9.00

Size:

Dimensions: 13.0 mm X 19.0 mm

Stone Type:

Main Stone Color:

We have 4 Prs in stock as of

4/18/2025 4:20:09 PM



I.G.M. Corporation

Incas Gold Mine Corporation
650 South Hill Street Suite #218
Los Angeles, CA 90014
Tel: (213)627-8916 Fax: (213)627-1990
www.incasgoldmine.com email@incasgoldmine.com

Order by Fax or Email

Please include the **Style Code** and the quantity of each style and fax or email the order to us.
For an optional order form, please visit our website, www.incasgoldmine.com/forms

Fax: (213)627-1990 email: order@incasgoldmine.com
Some items are NOT to Scale. View the Dimensions for an accurate measurement.

Style Code: E071-005

Approximate Weight 1.9 g

Description :

Hoop Earrings : YW : 1.5
gauge : Heart design :
Round/Oval : Hollow Plain
DiaCut : Hinge Lock : 14kt
Gold



Clasp: Hinge Lock

Inside Diameter \$30.00

Size:

Dimensions: 32.0 mm X 32.0 mm

Stone Type:

Main Stone Color:

We have 25 Prs in stock as of
4/18/2025 4:20:09 PM

Style Code: E071-006

Approximate Weight 4.5 g

Description :

Hoop Earrings : YL : 2 gauge :
Square/Rectangle : Hollow
Plain : Hinge Lock : 14kt Gold



Clasp: Hinge Lock

Inside Diameter \$60.00

Size:

Dimensions: 64.0 mm X 65.0 mm

Stone Type:

Main Stone Color:

We have 0 Prs in stock as of
4/18/2025 4:20:09 PM

Style Code: E071-008

Approximate Weight 1.6 g

Description :

Hoop Earrings : TC : 3 gauge :
Round/Oval : Hollow Plain :
Hinge Lock : 14kt Gold



Clasp: Hinge Lock

Inside Diameter \$15.00

Size:

Dimensions: 17.0 mm X 18.0 mm

Stone Type:

Main Stone Color:

We have 30 Prs in stock as of
4/18/2025 4:20:09 PM

Style Code: E071-009

Approximate Weight 2.1 g

Description :

Hoop Earrings : TC : 3 gauge :
Round/Oval : Hollow Plain :
Hinge Lock : 14kt Gold



Clasp: Hinge Lock

Inside Diameter \$20.00

Size:

Dimensions: 22.0 mm X 23.0 mm

Stone Type:

Main Stone Color:

We have 17 Prs in stock as of
4/18/2025 4:20:09 PM

Style Code: E071-056

Approximate Weight 7.3 g

Description :

Hoop Earrings : WT : 2
gauge : Square/Rectangle :
Hollow Plain : Hinge Lock :
14kt Gold



Clasp: Hinge Lock

Inside Diameter \$60.00

Size:

Dimensions: 64.0 mm X 65.0 mm

Stone Type:

Main Stone Color:

We have 3 Prs in stock as of
4/18/2025 4:20:09 PM

Style Code: E071-057

Approximate Weight 8.0 g

Description :

Hoop Earrings : WT : 2
gauge : Square/Rectangle :
Hollow Plain : Hinge Lock :
14kt Gold



Clasp: Hinge Lock

Inside Diameter \$70.00

Size:

Dimensions: 73.0 mm X 75.0 mm

Stone Type:

Main Stone Color:

We have 3 Prs in stock as of
4/18/2025 4:20:09 PM



I.G.M. Corporation

Incas Gold Mine Corporation
650 South Hill Street Suite #218
Los Angeles, CA 90014
Tel: (213)627-8916 Fax: (213)627-1990
www.incasgoldmine.com email@incasgoldmine.com

Order by Fax or Email

Please include the **Style Code** and the quantity of each style and fax or email the order to us.
For an optional order form, please visit our website, www.incasgoldmine.com/forms

Fax: (213)627-1990

email: order@incasgoldmine.com

Some items are NOT to Scale. View the Dimensions for an accurate measurement.

Style Code: E073-002

Approximate Weight 1.1 g

Description :

Hoop Earrings : YL : 2 gauge :
Round/Oval : Hollow Plain :
Hinge Lock : 14kt Gold



Clasp: Hinge Lock

Inside Diameter \$9.00

Size:

Dimensions: 13.0 mm X 15.0 mm

Stone Type:

Main Stone Color:

We have 1 Prs in stock as of
4/18/2025 4:20:09 PM

Style Code: E073-009

Approximate Weight 1.8 g

Description :

Hoop Earrings : YL : 2 gauge :
Hollow Plain : Hinge Lock :
14kt Gold



Clasp: Hinge Lock

Inside Diameter \$10.00

Size:

Dimensions: 15.0 mm X 15.5 mm

Stone Type:

Main Stone Color:

We have 1 Prs in stock as of
4/18/2025 4:20:09 PM

Style Code: E073-010

Approximate Weight 3.0 g

Description :

Hoop Earrings : YL : 2 gauge :
Hollow : Hinge Lock : 14kt
Gold



Clasp: Hinge Lock

Inside Diameter \$18.00

Size:

Dimensions: 23.5 mm X 24.5 mm

Stone Type:

Main Stone Color:

We have 1 Prs in stock as of
4/18/2025 4:20:09 PM

Style Code: E073-015

Approximate Weight 2.2 g

Description :

Hoop Earrings : YL : 2 gauge :
Round/Oval : Hollow : Hinge
Lock : 14kt Gold



Clasp: Hinge Lock

Inside Diameter \$17.00

Size:

Dimensions: 21.0 mm X 20.0 mm

Stone Type:

Main Stone Color:

We have 4 Prs in stock as of
4/18/2025 4:20:09 PM

Style Code: E073-016

Approximate Weight 2.6 g

Description :

Hoop Earrings : YL : 2 gauge :
Round/Oval : Hollow : Hinge
Lock : 14kt Gold



Clasp: Hinge Lock

Inside Diameter \$21.00

Size:

Dimensions: 24.0 mm X 24.0 mm

Stone Type:

Main Stone Color:

We have 4 Prs in stock as of
4/18/2025 4:20:09 PM

Style Code: E073-017

Approximate Weight 2.2 g

Description :

Hoop Earrings : YL : 3 gauge :
Round/Oval : Hollow :
Endless Closure : 14kt Gold



Clasp: Endless Closure

Inside Diameter \$15.00

Size:

Dimensions: 18.0 mm X 25.0 mm

Stone Type:

Main Stone Color:

We have 7 Prs in stock as of
4/18/2025 4:20:09 PM



I.G.M. Corporation

Incas Gold Mine Corporation
650 South Hill Street Suite #218
Los Angeles, CA 90014
Tel: (213)627-8916 Fax: (213)627-1990
www.incasgoldmine.com email@incasgoldmine.com

Order by Fax or Email

Please include the **Style Code** and the quantity of each style and fax or email the order to us.
For an optional order form, please visit our website, www.incasgoldmine.com/forms

Fax: (213)627-1990 email: order@incasgoldmine.com

Some items are NOT to Scale. View the Dimensions for an accurate measurement.

Style Code: E073-018

Approximate Weight 2.6 g

Description :

Hoop Earrings : YL : 3 gauge :
Round/Oval : Hollow :
Endless Closure : 14kt Gold



Clasp: Endless Closure

Inside Diameter \$16.00

Size:

Dimensions: 20.0 mm X 28.0 mm

Stone Type:

Main Stone Color:

We have 1 Prs in stock as of
4/18/2025 4:20:09 PM

Style Code: E073-023

Approximate Weight 1.3 g

Description :

Hoop Earrings : TC : 2 gauge :
Round/Oval : Hollow : Lever
Back : 14kt Gold



Clasp: Lever Back

Inside Diameter \$23.00

Size:

Dimensions: 28.0 mm X 30.0 mm

Stone Type:

Main Stone Color:

We have 0 Prs in stock as of
4/18/2025 4:20:09 PM

Style Code: E073-069

Approximate Weight 1.3 g

Description :

Hoop Earrings : WT : 4.5
gauge : Half Tube : Hollow :
Hinge Lock : 14kt Gold



Clasp: Hinge Lock

Inside Diameter \$7.00

Size:

Dimensions: 11.0 mm X 16.0 mm

Stone Type:

Main Stone Color:

We have 23 Prs in stock as of
4/18/2025 4:20:09 PM

Style Code: E074-067

Approximate Weight 2.8 g

Description :

Hoop Earrings : WT : 3.5
gauge : Twist design : Flat :
Hollow Plain : Hinge Lock :
14kt Gold



Clasp: Hinge Lock

Inside Diameter \$18.00

Size:

Dimensions: 23.0 mm X 25.0 mm

Stone Type:

Main Stone Color:

We have 8 Prs in stock as of
4/18/2025 4:20:09 PM

Style Code: E075-051

Approximate Weight 1.8 g

Description :

Hoop Earrings : WT : 2.8
gauge : Leaves design : Half
Tube : Hollow Satin DiaCut :
Hinge Lock : 14kt Gold



Clasp: Hinge Lock

Inside Diameter \$16.00

Size:

Dimensions: 19.0 mm X 20.0 mm

Stone Type:

Main Stone Color:

We have 3 Prs in stock as of
4/18/2025 4:20:09 PM

Style Code: E075-052

Approximate Weight 2.4 g

Description :

Hoop Earrings : WT : 2.8
gauge : Leaves design : Half
Tube : Hollow Satin DiaCut :
Hinge Lock : 14kt Gold



Clasp: Hinge Lock

Inside Diameter \$22.00

Size:

Dimensions: 24.7 mm X 26.0 mm

Stone Type:

Main Stone Color:

We have 2 Prs in stock as of
4/18/2025 4:20:09 PM



I.G.M. Corporation

Incas Gold Mine Corporation
650 South Hill Street Suite #218
Los Angeles, CA 90014
Tel: (213)627-8916 Fax: (213)627-1990
www.incasgoldmine.com email@incasgoldmine.com

Order by Fax or Email

Please include the **Style Code** and the quantity of each style and fax or email the order to us.
For an optional order form, please visit our website, www.incasgoldmine.com/forms

Fax: (213)627-1990 email: order@incasgoldmine.com

Some items are NOT to Scale. View the Dimensions for an accurate measurement.



Style Code: E076-064

Approximate Weight 4.9 g

Description :

Hoop Earrings : WT : 6mm
gauge : X or Star design :
Round/Oval : Hollow Crystal
Cut : Hinge Lock : 14kt Gold

Clasp: Hinge Lock

Inside Diameter \$21.00

Size:

Dimensions: 25.0 mm X 26.0 mm

Stone Type:

Main Stone Color:

**We have 20 Prs in stock as of
4/18/2025 4:20:09 PM**



Style Code: E077-007

Approximate Weight 1.5 g

Description :

Hoop Earrings : YL : 2 gauge :
Round/Oval : Hollow DiaCut :
Hinge Lock : 14kt Gold

Clasp: Hinge Lock

Inside Diameter \$13.00

Size:

Dimensions: 16.5 mm X 18.0 mm

Stone Type:

Main Stone Color:

**We have 39 Prs in stock as of
4/18/2025 4:20:09 PM**



Style Code: E077-008

Approximate Weight 1.7 g

Description :

Hoop Earrings : YL : 2 gauge :
Round/Oval : Hollow DiaCut :
Hinge Lock : 14kt Gold

Clasp: Hinge Lock

Inside Diameter \$15.00

Size:

Dimensions: 19.0 mm X 21.0 mm

Stone Type:

Main Stone Color:

**We have 9 Prs in stock as of
4/18/2025 4:20:09 PM**



Style Code: E077-016

Approximate Weight 1.9 g

Description :

Hoop Earrings : WT : 2
gauge : Round/Oval : Hollow
Plain : Endless Closure : 14kt
Gold

Clasp: Endless Closure

Inside Diameter \$23.00

Size:

Dimensions: 26.0 mm X 26.0 mm

Stone Type:

Main Stone Color:

**We have 10 Prs in stock as of
4/18/2025 4:20:09 PM**



Style Code: E077-018

Approximate Weight 3.6 g

Description :

Hoop Earrings : WT : Flat :
Push Back : 14kt Gold

Clasp: Push Back

Inside Diameter

Size:

Dimensions: 19.0 mm X 30.0 mm

Stone Type:

Main Stone Color:

**We have 4 Prs in stock as of
4/18/2025 4:20:09 PM**



Style Code: E079-003

Approximate Weight 1.0 g

Description :

Basket Hoop Earrings : YL :
3mm gauge : Casting DiaCut :
Wire Clasp : 14kt Gold

Clasp: Wire Clasp

Inside Diameter

Size:

Dimensions: 12.0 mm X 18.0 mm

Stone Type:

Main Stone Color:

**We have 2 Prs in stock as of
4/18/2025 4:20:09 PM**



I.G.M. Corporation

Incas Gold Mine Corporation
650 South Hill Street Suite #218
Los Angeles, CA 90014
Tel: (213)627-8916 Fax: (213)627-1990
www.incasgoldmine.com email@incasgoldmine.com

Order by Fax or Email

Please include the **Style Code** and the quantity of each style and fax or email the order to us.
For an optional order form, please visit our website, www.incasgoldmine.com/forms

Fax: (213)627-1990 email: order@incasgoldmine.com

Some items are NOT to Scale. View the Dimensions for an accurate measurement.

Style Code: E079-004

Approximate Weight 2.2 g

Description :

Basket Hoop Earrings : YR :
6mm gauge : Flower design :
Casting DiaCut : Wire Clasp :
14kt Gold



Clasp: Wire Clasp

Inside Diameter

Size:

Dimensions: 17.0 mm X 23.0 mm

Stone Type:

Main Stone Color:

We have 0 Prs in stock as of
4/18/2025 4:20:09 PM

Style Code: E081-018

Approximate Weight 1.8 g

Description :

Hoop Earrings : TC : 4 gauge :
Heart design : Concave :
Stamping
Tubing DiaCut : Endless
Closure : 14kt Gold



Clasp: Endless Closure

Inside Diameter \$15.00

Size:

Dimensions: 19.0 mm X 17.5 mm

Stone Type:

Main Stone Color:

We have 0 Prs in stock as of
4/18/2025 4:20:09 PM

Style Code: E081-019

Approximate Weight 2.6 g

Description :

Hoop Earrings : TC : 4 gauge :
Heart design : Concave :
Stamping
Tubing : Endless Closure :
14kt Gold



Clasp: Endless Closure

Inside Diameter \$20.00

Size:

Dimensions: 25.0 mm X 25.0 mm

Stone Type:

Main Stone Color:

We have 0 Prs in stock as of
4/18/2025 4:20:09 PM

Style Code: E081-020

Approximate Weight 3.3 g

Description :

Hoop Earrings : TC : 4 gauge :
Heart design : Concave :
Stamping
Tubing : Endless Closure :
14kt Gold



Clasp: Endless Closure

Inside Diameter \$25.00

Size:

Dimensions: 30.0 mm X 30.0 mm

Stone Type:

Main Stone Color:

We have 0 Prs in stock as of
4/18/2025 4:20:09 PM

Style Code: E081-021

Approximate Weight 4.2 g

Description :

Hoop Earrings : TC : 4 gauge :
Heart design : Concave :
Stamping
Tubing : Endless Closure :
14kt Gold



Clasp: Endless Closure

Inside Diameter \$35.00

Size:

Dimensions: 38.0 mm X 40.0 mm

Stone Type:

Main Stone Color:

We have 0 Prs in stock as of
4/18/2025 4:20:09 PM

Style Code: E081-022

Approximate Weight 5.2 g

Description :

Hoop Earrings : TC : 4.5
gauge : Heart design :
Concave : Stamping
Tubing DiaCut : Endless
Closure : 14kt Gold



Clasp: Endless Closure

Inside Diameter \$40.00

Size:

Dimensions: 45.0 mm X 45.0 mm

Stone Type:

Main Stone Color:

We have 0 Prs in stock as of
4/18/2025 4:20:09 PM



I.G.M. Corporation

Incas Gold Mine Corporation
650 South Hill Street Suite #218
Los Angeles, CA 90014
Tel: (213)627-8916 Fax: (213)627-1990
www.incasgoldmine.com email@incasgoldmine.com

Order by Fax or Email

Please include the **Style Code** and the quantity of each style and fax or email the order to us.
For an optional order form, please visit our website, www.incasgoldmine.com/forms

Fax: (213)627-1990 email: order@incasgoldmine.com

Some items are NOT to Scale. View the Dimensions for an accurate measurement.

Style Code: E081-023

Approximate Weight 5.9 g

Description :

Hoop Earrings : TC : 4 gauge :
Heart design : Concave :
Stamping
Tubing : 14kt Gold

Clasp:

Inside Diameter \$50.00

Size:

Dimensions: 55.0 mm X 55.0 mm

Stone Type:

Main Stone Color:

We have 3 Prs in stock as of
4/18/2025 4:20:09 PM

Style Code: E081-024

Approximate Weight 7.2 g

Description :

Hoop Earrings : TC : 4 gauge :
Heart design : Concave :
Stamping
Tubing : Spring Ring Lock :
14kt Gold

Clasp:

Inside Diameter \$60.00

Size:

Dimensions: 65.0 mm X 65.0 mm

Stone Type:

Main Stone Color:

We have 12 Prs in stock as of
4/18/2025 4:20:09 PM

Style Code: E081-025

Approximate Weight 7.9 g

Description :

Hoop Earrings : TC : 4 gauge :
Concave : Stamping
Tubing : 14kt Gold

Clasp:

Inside Diameter \$65.00

Size:

Dimensions: 70.0 mm X 70.0 mm

Stone Type:

Main Stone Color:

We have 10 Prs in stock as of
4/18/2025 4:20:09 PM

Style Code: E082-001

Approximate Weight 7.1 g

Description :

Hoop Earrings : YL : 6 gauge :
Hollow Satin : Endless
Closure : 14kt Gold

Clasp: Endless Closure

Inside Diameter \$50.00

Size:

Dimensions: 56.0 mm X 55.5 mm

Stone Type:

Main Stone Color:

We have 1 Prs in stock as of
4/18/2025 4:20:09 PM

Style Code: E082-002

Approximate Weight 8.6 g

Description :

Hoop Earrings : YL : 6 gauge :
Hollow Satin : Endless
Closure : 14kt Gold

Clasp: Endless Closure

Inside Diameter \$60.00

Size:

Dimensions: 66.0 mm X 65.5 mm

Stone Type:

Main Stone Color:

We have 5 Prs in stock as of
4/18/2025 4:20:09 PM

Style Code: E082-051

Approximate Weight 7.0 g

Description :

Hoop Earrings : YW : 6
gauge : Hollow Satin : Endless
Closure : 14kt Gold

Clasp: Endless Closure

Inside Diameter \$50.00

Size:

Dimensions: 57.0 mm X 55.5 mm

Stone Type:

Main Stone Color:

We have 15 Prs in stock as of
4/18/2025 4:20:09 PM



I.G.M. Corporation

Incas Gold Mine Corporation

650 South Hill Street Suite #218
Los Angeles, CA 90014

Tel: (213)627-8916 Fax: (213)627-1990
www.incasgoldmine.com email@incasgoldmine.com

Order by Fax or Email

Please include the **Style Code** and the quantity of each style and fax or email the order to us.
For an optional order form, please visit our website, www.incasgoldmine.com/forms

Fax: (213)627-1990

email: order@incasgoldmine.com

Some items are NOT to Scale. View the Dimensions for an accurate measurement.

Style Code: E082-052

Approximate Weight 8.2 g

Description :

Hoop Earrings : YW : 6
gauge : Hollow Satin : Endless
Closure : 14kt Gold

Clasp: Endless Closure

Inside Diameter \$60.00

Size:

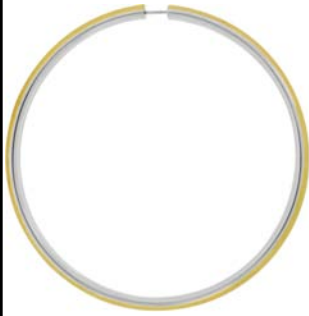
Dimensions: 66.0 mm X 65.5 mm

Stone Type:

Main Stone Color:

We have 16 Prs in stock as of

4/18/2025 4:20:09 PM



Style Code: E083-001

Approximate Weight 1.1 g

Description :

Hoop Earrings : TC : 2.7
gauge : X or Star design :
Concave : Stamping
Tubing DiaCut : Endless
Closure : 14kt Gold

Clasp: Endless Closure

Inside Diameter \$15.00

Size:

Dimensions: 19.0 mm X 19.0 mm

Stone Type:

Main Stone Color:

We have 0 Prs in stock as of

4/18/2025 4:20:09 PM



Style Code: E083-002

Approximate Weight 2.0 g

Description :

Hoop Earrings : TC : 2.7
gauge : X or Star design :
Concave : Stamping
Tubing DiaCut : Endless
Closure : 14kt Gold

Clasp: Endless Closure

Inside Diameter \$30.00

Size:

Dimensions: 33.0 mm X 32.5 mm

Stone Type:

Main Stone Color:

We have 0 Prs in stock as of

4/18/2025 4:20:09 PM



Style Code: E083-003

Approximate Weight 2.8 g

Description :

Hoop Earrings : TC : 2.7
gauge : X or Star design :
Concave : Stamping
Tubing DiaCut : Endless
Closure : 14kt Gold

Clasp: Endless Closure

Inside Diameter \$38.00

Size:

Dimensions: 41.0 mm X 40.0 mm

Stone Type:

Main Stone Color:

We have 0 Prs in stock as of

4/18/2025 4:20:09 PM



Style Code: E083-004

Approximate Weight 3.8 g

Description :

Hoop Earrings : TC : 2.7
gauge : Concave : Stamping
Tubing DiaCut : Endless
Closure : 14kt Gold

Clasp: Endless Closure

Inside Diameter \$55.00

Size:

Dimensions: 57.0 mm X 55.0 mm

Stone Type:

Main Stone Color:

We have 0 Prs in stock as of

4/18/2025 4:20:09 PM



Style Code: E083-005

Approximate Weight 4.2 g

Description :

Hoop Earrings : TC : 2.7
gauge : Concave : Stamping
Tubing DiaCut : Endless
Closure : 14kt Gold

Clasp: Endless Closure

Inside Diameter \$63.00

Size:

Dimensions: 64.0 mm X 64.0 mm

Stone Type:

Main Stone Color:

We have 0 Prs in stock as of

4/18/2025 4:20:09 PM





I.G.M. Corporation

Incas Gold Mine Corporation
650 South Hill Street Suite #218
Los Angeles, CA 90014
Tel: (213)627-8916 Fax: (213)627-1990
www.incasgoldmine.com email@incasgoldmine.com

Order by Fax or Email

Please include the **Style Code** and the quantity of each style and fax or email the order to us.
For an optional order form, please visit our website, www.incasgoldmine.com/forms

Fax: (213)627-1990 email: order@incasgoldmine.com

Some items are NOT to Scale. View the Dimensions for an accurate measurement.

Style Code: E084-021

Approximate Weight 3.6 g

Description :

Hoop Earrings : YL : 2.5
gauge : Triangle/other :
Machine Rolled Plain : Hinge
Lock : CZ White (Apr) : 14kt
Gold

Clasp: Hinge Lock

Inside Diameter \$24.00

Size:

Dimensions: 28.0 mm X 31.0 mm

Stone Type: CZ

Main Stone Color: White (Apr)

We have 14 Prs in stock as of

4/18/2025 4:20:09 PM



Style Code: E084-022

Approximate Weight 5.5 g

Description :

Hoop Earrings : YL : 2.5
gauge : Triangle/other :
Machine Rolled Plain : Hinge
Lock : CZ White (Apr) : 14kt
Gold

Clasp: Hinge Lock

Inside Diameter \$36.00

Size:

Dimensions: 41.0 mm X 44.0 mm

Stone Type: CZ

Main Stone Color: White (Apr)

We have 12 Prs in stock as of

4/18/2025 4:20:09 PM



Style Code: E107-101

Approximate Weight 1.1 g

Description :

Hoop Earrings : YL : Flower
design : Screw Back : 14kt
Gold

Clasp: Screw Back

Inside Diameter

Size:

Dimensions: 5.5 mm X 13.0 mm

Stone Type:

Main Stone Color: Red (Jul)

We have 2 Prs in stock as of

4/18/2025 4:20:09 PM



Style Code: E107-112

Approximate Weight 1.1 g

Description :

Hoop Earrings : YL : Ladybug
design : Screw Back : 14kt
Gold

Clasp: Screw Back

Inside Diameter

Size:

Dimensions: 5.5 mm X 13.0 mm

Stone Type:

Main Stone Color: Lt Green (Aug)

We have 2 Prs in stock as of

4/18/2025 4:20:09 PM



Style Code: E107-113

Approximate Weight 1.1 g

Description :

Hoop Earrings : YL : Ladybug
design : Screw Back : 14kt
Gold

Clasp: Screw Back

Inside Diameter

Size:

Dimensions: 5.5 mm X 13.0 mm

Stone Type:

Main Stone Color: Yellow (Nov)

We have 2 Prs in stock as of

4/18/2025 4:20:09 PM



Style Code: E107-121

Approximate Weight 1.2 g

Description :

Hoop Earrings : YL : Girl
design : Screw Back : 14kt
Gold

Clasp: Screw Back

Inside Diameter

Size:

Dimensions: 4.0 mm X 13.0 mm

Stone Type:

Main Stone Color: Red (Jul)

We have 14 Prs in stock as of

4/18/2025 4:20:09 PM





I.G.M. Corporation

Incas Gold Mine Corporation

650 South Hill Street Suite #218

Los Angeles, CA 90014

Tel: (213)627-8916 Fax: (213)627-1990

www.incasgoldmine.com email@incasgoldmine.com

Order by Fax or Email

Please include the **Style Code** and the quantity of each style and fax or email the order to us.

For an optional order form, please visit our website, www.incasgoldmine.com/forms

Fax: (213)627-1990

email: order@incasgoldmine.com

Some items are NOT to Scale. View the Dimensions for an accurate measurement.

Style Code: E107-122

Approximate Weight 1.2 g

Description :

**Hoop Earrings : YL : Girl
design : Screw Back : 14kt
Gold**



Clasp: Screw Back

Inside Diameter

Size:

Dimensions: 4.0 mm X 13.0 mm

Stone Type:

Main Stone Color: Pink (Oct)

We have 1 Prs in stock as of

4/18/2025 4:20:09 PM