



## I.G.M. Corporation

Incas Gold Mine Corporation  
650 South Hill Street Suite #218  
Los Angeles, CA 90014  
Tel: (213)627-8916 Fax: (213)627-1990  
www.incasgoldmine.com email@incasgoldmine.com

### Order by Fax or Email

Please include the **Style Code** and the quantity of each style and fax or email the order to us.  
For an optional order form, please visit our website, [www.incasgoldmine.com/forms](http://www.incasgoldmine.com/forms)

**Fax: (213)627-1990 email: order@incasgoldmine.com**

Some items are NOT to Scale. View the Dimensions for an accurate measurement.

#### Style Code: O004-260

Approximate Weight 6.0 g

##### Description :

Bangle Women Slip-on : YL : 3  
gauge : Size 6 : X or Star  
design : Flat : Machine Rolled  
DiaCut : NO Lock/Clasp : 14kt  
Gold



Inside Diameter 53.0mm

Thickness: ~ 3.0 mm

Stone Type:

We have 1 pcs in stock as of  
4/18/2025 4:08:30 PM

#### Style Code: O005-001

Approximate Weight 16.4 g

##### Description :

Bangle Women Fancy Disco  
Chain : TC : Size 7.5 :  
Round/Oval : Hollow DiaCut :  
Lobster Clasp : 14kt Gold



Inside Diameter

Thickness: 8.0 mm ~ 8.0 mm

Stone Type:

We have 6 pcs in stock as of  
4/18/2025 4:08:30 PM

#### Style Code: O005-002

Approximate Weight 13.6 g

##### Description :

Bangle Women Fancy Disco  
Chain : YW : Size 7.5 :  
Round/Oval : Hollow DiaCut :  
Lobster Clasp : 14kt Gold



Inside Diameter

Thickness: 8.0 mm ~ 8.0 mm

Stone Type:

We have 10 pcs in stock as of  
4/18/2025 4:08:30 PM

#### Style Code: O005-003

Approximate Weight 13.5 g

##### Description :

Bangle Women Fancy Disco  
Chain : WT : Size 7.5 :  
Round/Oval : Hollow DiaCut :  
Lobster Clasp : 14kt Gold



Inside Diameter

Thickness: 8.0 mm ~ 8.0 mm

Stone Type:

We have 7 pcs in stock as of  
4/18/2025 4:08:30 PM

#### Style Code: O005-004

Approximate Weight 20.0 g

##### Description :

Bangle Women Fancy Disco  
Chain : YW : Size 7.5 :  
Round/Oval : Hollow DiaCut :  
Lobster Clasp : 14kt Gold



Inside Diameter

Thickness: 12.0 mm ~ 12.0 mm

Stone Type:

We have 2 pcs in stock as of  
4/18/2025 4:08:30 PM

#### Style Code: O005-005

Approximate Weight 20.8 g

##### Description :

Bangle Women Fancy Disco  
Chain : WT : Size 7.5 :  
Round/Oval : Hollow DiaCut :  
Lobster Clasp : 14kt Gold



Inside Diameter

Thickness: 12.0 mm ~ 12.0 mm

Stone Type:

We have 7 pcs in stock as of  
4/18/2025 4:08:30 PM

#### Style Code: O005-006

Approximate Weight 19.9 g

##### Description :

Bangle Women Fancy Disco  
Chain : YW : Size 7.5 :  
Round/Oval : Hollow DiaCut :  
Lobster Clasp : 14kt Gold



Inside Diameter

Thickness: 10.0 mm ~ 10.0 mm

Stone Type:

We have 10 pcs in stock as of  
4/18/2025 4:08:30 PM

#### Style Code: O005-007

Approximate Weight 19.9 g

##### Description :

Bangle Women Fancy Disco  
Chain : WT : Size 7.5 :  
Round/Oval : Hollow DiaCut :  
Lobster Clasp : 14kt Gold



Inside Diameter

Thickness: 10.0 mm ~ 10.0 mm

Stone Type:

We have 10 pcs in stock as of  
4/18/2025 4:08:30 PM



## I.G.M. Corporation

Incas Gold Mine Corporation  
650 South Hill Street Suite #218  
Los Angeles, CA 90014  
Tel: (213)627-8916 Fax: (213)627-1990  
www.incasgoldmine.com email@incasgoldmine.com

### Order by Fax or Email

Please include the **Style Code** and the quantity of each style and fax or email the order to us.  
For an optional order form, please visit our website, [www.incasgoldmine.com/forms](http://www.incasgoldmine.com/forms)

**Fax: (213)627-1990 email: order@incasgoldmine.com**  
Some items are NOT to Scale. View the Dimensions for an accurate measurement.

#### Style Code: O006-165

Approximate Weight 33.0 g

##### Description :

Bangle Women 7 Days : YL : 2  
gauge : Size 6.5 : Concave :  
Machine Rolled Plain : NO  
Lock/Clasp : 14kt Gold



Inside Diameter 55.0mm

Thickness: 2.0 mm ~ 2.0 mm

Stone Type:

We have 0 pcs in stock as of  
4/18/2025 4:08:30 PM

#### Style Code: O006-170

Approximate Weight 4.0 g

##### Description :

Bangle Women 7 Days : YL : 2  
gauge : Size 7 : Concave :  
Machine Rolled Plain : NO  
Lock/Clasp : 14kt Gold



Inside Diameter 60.0mm

Thickness: 2.0 mm ~ 2.0 mm

Stone Type:

We have 0 pcs in stock as of  
4/18/2025 4:08:30 PM

#### Style Code: O006-175

Approximate Weight 33.3 g

##### Description :

Bangle Women 7 Days : YL : 2  
gauge : Size 7.5 : Concave :  
Machine Rolled Plain : NO  
Lock/Clasp : 14kt Gold



Inside Diameter 63.0mm

Thickness: 2.0 mm ~ 2.0 mm

Stone Type:

We have 2 pcs in stock as of  
4/18/2025 4:08:30 PM

#### Style Code: O006-180

Approximate Weight 36.5 g

##### Description :

Bangle Women 7 Days : YL : 2  
gauge : Size 8 : Concave :  
Machine Rolled Plain : NO  
Lock/Clasp : 14kt Gold



Inside Diameter 66.0mm

Thickness: 2.0 mm ~ 2.0 mm

Stone Type:

We have 5 pcs in stock as of  
4/18/2025 4:08:30 PM

#### Style Code: O006-265

Approximate Weight 5.6 g

##### Description :

Bangle Women 7 Days : YL : 3  
gauge : Size 6.5 : Concave :  
Machine Rolled Plain : NO  
Lock/Clasp : 14kt Gold



Inside Diameter 55.0mm

Thickness: 3.0 mm ~ 3.0 mm

Stone Type:

We have 0 pcs in stock as of  
4/18/2025 4:08:30 PM

#### Style Code: O006-270

Approximate Weight 6.0 g

##### Description :

Bangle Women 7 Days : YL : 3  
gauge : Size 7 : Concave :  
Machine Rolled Plain : NO  
Lock/Clasp : 14kt Gold



Inside Diameter 60.0mm

Thickness: 3.0 mm ~ 3.0 mm

Stone Type:

We have 0 pcs in stock as of  
4/18/2025 4:08:30 PM

#### Style Code: O006-275

Approximate Weight 44.3 g

##### Description :

Bangle Women 7 Days : YL : 3  
gauge : Size 7.5 : Concave :  
Machine Rolled Plain : NO  
Lock/Clasp : 14kt Gold



Inside Diameter 63.0mm

Thickness: 3.0 mm ~ 3.0 mm

Stone Type:

We have 3 pcs in stock as of  
4/18/2025 4:08:30 PM

#### Style Code: O006-280

Approximate Weight 47.9 g

##### Description :

Bangle Women 7 Days : YL : 3  
gauge : Size 8 : Concave :  
Machine Rolled Plain : NO  
Lock/Clasp : 14kt Gold



Inside Diameter 66.0mm

Thickness: 3.0 mm ~ 3.0 mm

Stone Type:

We have 1 pcs in stock as of  
4/18/2025 4:08:30 PM



## I.G.M. Corporation

Incas Gold Mine Corporation  
650 South Hill Street Suite #218  
Los Angeles, CA 90014  
Tel: (213)627-8916 Fax: (213)627-1990  
www.incasgoldmine.com email@incasgoldmine.com

### Order by Fax or Email

Please include the **Style Code** and the quantity of each style and fax or email the order to us.  
For an optional order form, please visit our website, [www.incasgoldmine.com/forms](http://www.incasgoldmine.com/forms)

**Fax: (213)627-1990 email: order@incasgoldmine.com**

Some items are NOT to Scale. View the Dimensions for an accurate measurement.

#### Style Code: O006-32H

Approximate Weight 7.6 g

##### Description :

Bangle Women Slip-on : YL : 4  
gauge : Size 7.0 : Concave :  
Machine Rolled Plain : NO  
Lock/Clasp : 14kt Gold



Inside Diameter 55.0mm

Thickness: 4.0 mm ~ 4.0 mm

Stone Type:

We have 0 pcs in stock as of  
4/18/2025 4:08:30 PM

#### Style Code: O006-33H

Approximate Weight 7.0 g

##### Description :

Bangle Women Slip-on : YL : 4  
gauge : Size 7.0 : Concave :  
Machine Rolled Plain : NO  
Lock/Clasp : 14kt Gold



Inside Diameter 55.0mm

Thickness: 4.0 mm ~ 4.0 mm

Stone Type:

We have 0 pcs in stock as of  
4/18/2025 4:08:30 PM

#### Style Code: O006-34H

Approximate Weight 7.0 g

##### Description :

Bangle Women Slip-on : YL : 4  
gauge : Size 8.0 : Concave :  
Machine Rolled Plain : NO  
Lock/Clasp : 14kt Gold



Inside Diameter 55.0mm

Thickness: 4.0 mm ~ 4.0 mm

Stone Type:

We have 0 pcs in stock as of  
4/18/2025 4:08:30 PM

#### Style Code: O006-36S

Approximate Weight 7.0 g

##### Description :

Bangle Women 7 Days : YL : 4  
gauge : Size 6.5 : Concave :  
Machine Rolled Plain : NO  
Lock/Clasp : 14kt Gold



Inside Diameter 55.0mm

Thickness: 4.0 mm ~ 4.0 mm

Stone Type:

We have 0 pcs in stock as of  
4/18/2025 4:08:30 PM

#### Style Code: O006-37O

Approximate Weight 56.1 g

##### Description :

Bangle Women 7 Days : YL : 4  
gauge : Size 7 : Concave :  
Machine Rolled Plain : NO  
Lock/Clasp : 14kt Gold



Inside Diameter 60.0mm

Thickness: 4.0 mm ~ 4.0 mm

Stone Type:

We have 0 pcs in stock as of  
4/18/2025 4:08:30 PM

#### Style Code: O006-37S

Approximate Weight 57.0 g

##### Description :

Bangle Women 7 Days : YL : 4  
gauge : Size 7.5 : Concave :  
Machine Rolled Plain : NO  
Lock/Clasp : 14kt Gold



Inside Diameter 63.0mm

Thickness: 4.0 mm ~ 4.0 mm

Stone Type:

We have 1 pcs in stock as of  
4/18/2025 4:08:30 PM

#### Style Code: O006-38O

Approximate Weight 56.4 g

##### Description :

Bangle Women 7 Days : YL : 4  
gauge : Size 8 : Concave :  
Machine Rolled Plain : NO  
Lock/Clasp : 14kt Gold



Inside Diameter 66.0mm

Thickness: 4.0 mm ~ 4.0 mm

Stone Type:

We have 2 pcs in stock as of  
4/18/2025 4:08:30 PM

#### Style Code: O006-42H

Approximate Weight 9.5 g

##### Description :

Bangle Women Slip-on : YL : 5  
gauge : Size 7 : Concave :  
Machine Rolled Plain : NO  
Lock/Clasp : 14kt Gold



Inside Diameter 60.0mm

Thickness: 5.0 mm ~ 5.0 mm

Stone Type:

We have 0 pcs in stock as of  
4/18/2025 4:08:30 PM





## I.G.M. Corporation

Incas Gold Mine Corporation  
650 South Hill Street Suite #218  
Los Angeles, CA 90014  
Tel: (213)627-8916 Fax: (213)627-1990  
www.incasgoldmine.com email@incasgoldmine.com

### Order by Fax or Email

Please include the **Style Code** and the quantity of each style and fax or email the order to us.  
For an optional order form, please visit our website, [www.incasgoldmine.com/forms](http://www.incasgoldmine.com/forms)

**Fax: (213)627-1990 email: order@incasgoldmine.com**  
Some items are NOT to Scale. View the Dimensions for an accurate measurement.

#### Style Code: O006-43H

Approximate Weight 9.5 g

##### Description :

Bangle Women Slip-on : YL : 5  
gauge : Size 7.5 : Concave :  
Machine Rolled Plain : NO  
Lock/Clasp : 14kt Gold

Inside Diameter 60.0mm

Thickness: 5.0 mm ~ 5.0 mm

Stone Type:

We have 0 pcs in stock as of  
4/18/2025 4:08:30 PM



#### Style Code: O006-44H

Approximate Weight 10.4 g

##### Description :

Bangle Women Slip-on : YL : 5  
gauge : Size 8.0 : Concave :  
Machine Rolled Plain : NO  
Lock/Clasp : 14kt Gold

Inside Diameter 60.0mm

Thickness: 5.0 mm ~ 5.0 mm

Stone Type:

We have 0 pcs in stock as of  
4/18/2025 4:08:30 PM



#### Style Code: O006-470

Approximate Weight 61.4 g

##### Description :

Bangle Women 7 Days : YL : 5  
gauge : Size 7 : Concave :  
Machine Rolled Plain : NO  
Lock/Clasp : 14kt Gold

Inside Diameter 60.0mm

Thickness: 5.0 mm ~ 5.0 mm

Stone Type:

We have 2 pcs in stock as of  
4/18/2025 4:08:30 PM



#### Style Code: O006-475

Approximate Weight 64.5 g

##### Description :

Bangle Women 7 Days : YL : 5  
gauge : Size 7.5 : Concave :  
Machine Rolled Plain : NO  
Lock/Clasp : 14kt Gold

Inside Diameter 63.0mm

Thickness: 5.0 mm ~ 5.0 mm

Stone Type:

We have 2 pcs in stock as of  
4/18/2025 4:08:30 PM



#### Style Code: O006-480

Approximate Weight 67.9 g

##### Description :

Bangle Women 7 Days : YL : 5  
gauge : Size 8 : Concave :  
Machine Rolled Plain : NO  
Lock/Clasp : 14kt Gold

Inside Diameter 66.0mm

Thickness: 5.0 mm ~ 5.0 mm

Stone Type:

We have 4 pcs in stock as of  
4/18/2025 4:08:30 PM



#### Style Code: O006-51H

Approximate Weight 3.0 g

##### Description :

Bangle Women Slip-on : WT :  
2 gauge : Size 6.5 : Concave :  
Machine Rolled Plain : NO  
Lock/Clasp : 14kt Gold

Inside Diameter 55.0mm

Thickness: 2.0 mm ~ 2.0 mm

Stone Type:

We have 0 pcs in stock as of  
4/18/2025 4:08:30 PM



#### Style Code: O006-52H

Approximate Weight 3.0 g

##### Description :

Bangle Women Slip-on : WT :  
2 gauge : Size 7.0 : Concave :  
Machine Rolled Plain : NO  
Lock/Clasp : 14kt Gold

Inside Diameter 55.0mm

Thickness: 2.0 mm ~ 2.0 mm

Stone Type:

We have 0 pcs in stock as of  
4/18/2025 4:08:30 PM



#### Style Code: O006-53H

Approximate Weight 3.0 g

##### Description :

Bangle Women Slip-on : WT :  
2 gauge : Size 7.5 : Concave :  
Machine Rolled Plain : NO  
Lock/Clasp : 14kt Gold

Inside Diameter 55.0mm

Thickness: 2.0 mm ~ 2.0 mm

Stone Type:

We have 0 pcs in stock as of  
4/18/2025 4:08:30 PM





**I.G.M. Corporation**  
Incas Gold Mine Corporation  
650 South Hill Street Suite #218  
Los Angeles, CA 90014  
Tel: (213)627-8916 Fax: (213)627-1990  
www.incasgoldmine.com email@incasgoldmine.com

**Order by Fax or Email**

Please include the **Style Code** and the quantity of each style and fax or email the order to us.  
For an optional order form, please visit our website, [www.incasgoldmine.com/forms](http://www.incasgoldmine.com/forms)

**Fax: (213)627-1990 email: order@incasgoldmine.com**

Some items are NOT to Scale. View the Dimensions for an accurate measurement.

**Style Code: O006-54H**

**Approximate Weight 3.9 g**

**Description :**

Bangle Women Slip-on : WT :  
2 gauge : Size 8.0 : Concave :  
Machine Rolled Plain : NO  
Lock/Clasp : 14kt Gold



**Inside Diameter 55.0mm**

**Thickness: 2.0 mm ~ 2.0 mm**

**Stone Type:**

**We have 6 pcs in stock as of  
4/18/2025 4:08:30 PM**

**Style Code: O006-565**

**Approximate Weight 3.0 g**

**Description :**

Bangle Women 7 Days : WT :  
2 gauge : Size 6.5 : Concave :  
Machine Rolled Plain : NO  
Lock/Clasp : 14kt Gold



**Inside Diameter 55.0mm**

**Thickness: 2.0 mm ~ 2.0 mm**

**Stone Type:**

**We have 0 pcs in stock as of  
4/18/2025 4:08:30 PM**

**Style Code: O006-570**

**Approximate Weight 3.3 g**

**Description :**

Bangle Women 7 Days : WT :  
2 gauge : Size 7 : Concave :  
Machine Rolled Plain : NO  
Lock/Clasp : 14kt Gold



**Inside Diameter 60.0mm**

**Thickness: 2.0 mm ~ 2.0 mm**

**Stone Type:**

**We have 0 pcs in stock as of  
4/18/2025 4:08:30 PM**

**Style Code: O006-575**

**Approximate Weight 3.5 g**

**Description :**

Bangle Women 7 Days : WT :  
2 gauge : Size 7.5 : Concave :  
Machine Rolled Plain : NO  
Lock/Clasp : 14kt Gold



**Inside Diameter 63.0mm**

**Thickness: 2.0 mm ~ 2.0 mm**

**Stone Type:**

**We have 0 pcs in stock as of  
4/18/2025 4:08:30 PM**

**Style Code: O006-580**

**Approximate Weight 3.9 g**

**Description :**

Bangle Women 7 Days : WT :  
2 gauge : Size 8 : Concave :  
Machine Rolled Plain : NO  
Lock/Clasp : 14kt Gold



**Inside Diameter 66.0mm**

**Thickness: 2.0 mm ~ 2.0 mm**

**Stone Type:**

**We have 0 pcs in stock as of  
4/18/2025 4:08:30 PM**

**Style Code: O006-62H**

**Approximate Weight 6.7 g**

**Description :**

Bangle Women Slip-on : WT :  
3 gauge : Size 7.0 : Concave :  
Machine Rolled Plain : NO  
Lock/Clasp : 14kt Gold



**Inside Diameter 55.0mm**

**Thickness: 3.0 mm ~ 3.0 mm**

**Stone Type:**

**We have 1 pcs in stock as of  
4/18/2025 4:08:30 PM**

**Style Code: O006-63H**

**Approximate Weight 5.6 g**

**Description :**

Bangle Women Slip-on : WT :  
3 gauge : Size 7.5 : Concave :  
Machine Rolled Plain : NO  
Lock/Clasp : 14kt Gold



**Inside Diameter 55.0mm**

**Thickness: 3.0 mm ~ 3.0 mm**

**Stone Type:**

**We have 0 pcs in stock as of  
4/18/2025 4:08:30 PM**

**Style Code: O006-64H**

**Approximate Weight 5.6 g**

**Description :**

Bangle Women Slip-on : WT :  
3 gauge : Size 8.0 : Concave :  
Machine Rolled Plain : NO  
Lock/Clasp : 14kt Gold



**Inside Diameter 55.0mm**

**Thickness: 3.0 mm ~ 3.0 mm**

**Stone Type:**

**We have 0 pcs in stock as of  
4/18/2025 4:08:30 PM**



**I.G.M. Corporation**  
Incas Gold Mine Corporation  
650 South Hill Street Suite #218  
Los Angeles, CA 90014  
Tel: (213)627-8916 Fax: (213)627-1990  
www.incasgoldmine.com email@incasgoldmine.com

**Order by Fax or Email**

Please include the **Style Code** and the quantity of each style and fax or email the order to us.  
For an optional order form, please visit our website, [www.incasgoldmine.com/forms](http://www.incasgoldmine.com/forms)

**Fax: (213)627-1990 email: order@incasgoldmine.com**  
Some items are NOT to Scale. View the Dimensions for an accurate measurement.

**Style Code: O006-665**

**Approximate Weight 5.6 g**

**Description :**

Bangle Women 7 Days : WT :  
3 gauge : Size 6.5 : Concave :  
Machine Rolled Plain : NO  
Lock/Clasp : 14kt Gold

**Inside Diameter 55.0mm**

**Thickness: 3.0 mm ~ 3.0 mm**

**Stone Type:**

**We have 0 pcs in stock as of  
4/18/2025 4:08:30 PM**



**Style Code: O006-670**

**Approximate Weight 6.5 g**

**Description :**

Bangle Women 7 Days : WT :  
3 gauge : Size 7 : Concave :  
Machine Rolled Plain : NO  
Lock/Clasp : 14kt Gold

**Inside Diameter 60.0mm**

**Thickness: 3.0 mm ~ 3.0 mm**

**Stone Type:**

**We have 0 pcs in stock as of  
4/18/2025 4:08:30 PM**



**Style Code: O006-675**

**Approximate Weight 7.0 g**

**Description :**

Bangle Women 7 Days : WT :  
3 gauge : Size 7.5 : Concave :  
Machine Rolled Plain : NO  
Lock/Clasp : 14kt Gold

**Inside Diameter 63.0mm**

**Thickness: 3.0 mm ~ 3.0 mm**

**Stone Type:**

**We have 0 pcs in stock as of  
4/18/2025 4:08:30 PM**



**Style Code: O006-680**

**Approximate Weight 7.5 g**

**Description :**

Bangle Women 7 Days : WT :  
3 gauge : Size 8 : Concave :  
Machine Rolled Plain : NO  
Lock/Clasp : 14kt Gold

**Inside Diameter 66.0mm**

**Thickness: 3.0 mm ~ 3.0 mm**

**Stone Type:**

**We have 0 pcs in stock as of  
4/18/2025 4:08:30 PM**



**Style Code: O006-765**

**Approximate Weight 6.8 g**

**Description :**

Bangle Women 7 Days : WT :  
4 gauge : Size 6.5 : Concave :  
Machine Rolled Plain : NO  
Lock/Clasp : 14kt Gold

**Inside Diameter 55.0mm**

**Thickness: 4.0 mm ~ 4.0 mm**

**Stone Type:**

**We have 0 pcs in stock as of  
4/18/2025 4:08:30 PM**



**Style Code: O006-770**

**Approximate Weight 7.0 g**

**Description :**

Bangle Women 7 Days : WT :  
4 gauge : Size 7 : Concave :  
Machine Rolled Plain : NO  
Lock/Clasp : 14kt Gold

**Inside Diameter 60.0mm**

**Thickness: 4.0 mm ~ 4.0 mm**

**Stone Type:**

**We have 0 pcs in stock as of  
4/18/2025 4:08:30 PM**



**Style Code: O006-775**

**Approximate Weight 8.1 g**

**Description :**

Bangle Women 7 Days : WT :  
4 gauge : Size 7.5 : Concave :  
Machine Rolled Plain : NO  
Lock/Clasp : 14kt Gold

**Inside Diameter 63.0mm**

**Thickness: 4.0 mm ~ 4.0 mm**

**Stone Type:**

**We have 0 pcs in stock as of  
4/18/2025 4:08:30 PM**



**Style Code: O006-780**

**Approximate Weight 8.0 g**

**Description :**

Bangle Women 7 Days : WT :  
4 gauge : Size 8 : Concave :  
Machine Rolled Plain : NO  
Lock/Clasp : 14kt Gold

**Inside Diameter 66.0mm**

**Thickness: 4.0 mm ~ 4.0 mm**

**Stone Type:**

**We have 0 pcs in stock as of  
4/18/2025 4:08:30 PM**





## I.G.M. Corporation

Incas Gold Mine Corporation  
650 South Hill Street Suite #218  
Los Angeles, CA 90014  
Tel: (213)627-8916 Fax: (213)627-1990  
www.incsgoldmine.com email@incsgoldmine.com

### Order by Fax or Email

Please include the **Style Code** and the quantity of each style and fax or email the order to us.  
For an optional order form, please visit our website, [www.incsgoldmine.com/forms](http://www.incsgoldmine.com/forms)

**Fax: (213)627-1990 email: order@incsgoldmine.com**

Some items are NOT to Scale. View the Dimensions for an accurate measurement.

#### Style Code: O006-870

Approximate Weight 8.8 g

##### Description :

Bangle Women 7 Days : WT :  
5 gauge : Size 7 : Concave :  
Machine Rolled Plain : NO  
Lock/Clasp : 14kt Gold



Inside Diameter 60.0mm

Thickness: 5.0 mm ~ 5.0 mm

Stone Type:

We have 0 pcs in stock as of  
4/18/2025 4:08:30 PM

#### Style Code: O006-880

Approximate Weight 10.0 g

##### Description :

Bangle Women 7 Days : WT :  
5 gauge : Size 8 : Concave :  
Machine Rolled Plain : NO  
Lock/Clasp : 14kt Gold



Inside Diameter 66.0mm

Thickness: 5.0 mm ~ 5.0 mm

Stone Type:

We have 0 pcs in stock as of  
4/18/2025 4:08:30 PM

#### Style Code: O007-165

Approximate Weight 28.0 g

##### Description :

Bangle Women 7 Days : YL : 2  
gauge : Size 6.5 : X or Star  
design : Flat : Machine Rolled  
DiaCut : NO Lock/Clasp : 14kt  
Gold



Inside Diameter 55.0mm

Thickness: 2.0 mm ~ 2.0 mm

Stone Type:

We have 0 pcs in stock as of  
4/18/2025 4:08:30 PM

#### Style Code: O007-170

Approximate Weight 28.6 g

##### Description :

Bangle Women 7 Days : YL : 2  
gauge : Size 7 : X or Star  
design : Flat : Machine Rolled  
DiaCut : NO Lock/Clasp : 14kt  
Gold



Inside Diameter 60.0mm

Thickness: 2.0 mm ~ 2.0 mm

Stone Type:

We have 0 pcs in stock as of  
4/18/2025 4:08:30 PM

#### Style Code: O007-175

Approximate Weight 29.1 g

##### Description :

Bangle Women 7 Days : YL : 2  
gauge : Size 7.5 : X or Star  
design : Flat : Machine Rolled  
DiaCut : NO Lock/Clasp : 14kt  
Gold



Inside Diameter 63.0mm

Thickness: 2.0 mm ~ 2.0 mm

Stone Type:

We have 0 pcs in stock as of  
4/18/2025 4:08:30 PM

#### Style Code: O007-180

Approximate Weight 29.8 g

##### Description :

Bangle Women 7 Days : YL : 2  
gauge : Size 8 : X or Star  
design : Flat : Machine Rolled  
DiaCut : NO Lock/Clasp : 14kt  
Gold



Inside Diameter 66.0mm

Thickness: 2.0 mm ~ 2.0 mm

Stone Type:

We have 0 pcs in stock as of  
4/18/2025 4:08:30 PM

#### Style Code: O007-270

Approximate Weight 2.7 g

##### Description :

Bangle Women Slip-on : YL : 2  
gauge : Size 7 : Chevron  
design : Flat : Machine Rolled  
DiaCut : NO Lock/Clasp : 14kt  
Gold



Inside Diameter 60.0mm

Thickness: 2.0 mm ~ 2.0 mm

Stone Type:

We have 1 pcs in stock as of  
4/18/2025 4:08:30 PM

#### Style Code: O007-280

Approximate Weight 4.2 g

##### Description :

Bangle Women Slip-on : YL : 2  
gauge : Size 8 : Chevron  
design : Flat : Machine Rolled  
DiaCut : NO Lock/Clasp : 14kt  
Gold



Inside Diameter 66.0mm

Thickness: 2.0 mm ~ 2.0 mm

Stone Type:

We have 1 pcs in stock as of  
4/18/2025 4:08:30 PM





**I.G.M. Corporation**  
Incas Gold Mine Corporation  
650 South Hill Street Suite #218  
Los Angeles, CA 90014  
Tel: (213)627-8916 Fax: (213)627-1990  
www.incsgoldmine.com email@incsgoldmine.com

**Order by Fax or Email**

Please include the **Style Code** and the quantity of each style and fax or email the order to us.  
For an optional order form, please visit our website, [www.incsgoldmine.com/forms](http://www.incsgoldmine.com/forms)

**Fax: (213)627-1990 email: order@incsgoldmine.com**

Some items are NOT to Scale. View the Dimensions for an accurate measurement.

**Style Code: O007-365**

**Approximate Weight 4.0 g**

**Description :**

Bangle Women 7 Days : YL : 3  
gauge : Size 6.5 : X or Star  
design : Flat : Machine Rolled  
DiaCut : NO Lock/Clasp : 14kt  
Gold



**Inside Diameter 55.0mm**

**Thickness: 3.0 mm ~ 3.0 mm**

**Stone Type:**

We have 0 pcs in stock as of  
4/18/2025 4:08:30 PM

**Style Code: O007-370**

**Approximate Weight 33.7 g**

**Description :**

Bangle Women 7 Days : YL : 3  
gauge : Size 7.0 : X or Star  
design : Flat : Machine Rolled  
DiaCut : NO Lock/Clasp : 14kt  
Gold



**Inside Diameter 60.0mm**

**Thickness: 3.0 mm ~ 3.0 mm**

**Stone Type:**

We have 1 pcs in stock as of  
4/18/2025 4:08:30 PM

**Style Code: O007-375**

**Approximate Weight 36.1 g**

**Description :**

Bangle Women 7 Days : YL : 3  
gauge : Size 7.5 : X or Star  
design : Flat : Machine Rolled  
DiaCut : NO Lock/Clasp : 14kt  
Gold



**Inside Diameter 63.0mm**

**Thickness: 3.0 mm ~ 3.0 mm**

**Stone Type:**

We have 0 pcs in stock as of  
4/18/2025 4:08:30 PM

**Style Code: O007-380**

**Approximate Weight 36.4 g**

**Description :**

Bangle Women 7 Days : YL : 3  
gauge : Size 8 : X or Star  
design : Flat : Machine Rolled  
DiaCut : NO Lock/Clasp : 14kt  
Gold



**Inside Diameter 66.0mm**

**Thickness: 3.0 mm ~ 3.0 mm**

**Stone Type:**

We have 3 pcs in stock as of  
4/18/2025 4:08:30 PM

**Style Code: O007-480**

**Approximate Weight 5.4 g**

**Description :**

Bangle Women Slip-on : YL : 3  
gauge : Size 8 : X or Star  
design : Flat : Machine Rolled  
DiaCut : NO Lock/Clasp : 14kt  
Gold



**Inside Diameter 66.0mm**

**Thickness: 3.0 mm ~ 3.0 mm**

**Stone Type:**

We have 1 pcs in stock as of  
4/18/2025 4:08:30 PM

**Style Code: O008-180**

**Approximate Weight 4.3 g**

**Description :**

Bangle Women Slip-on : YL :  
Size 8 : Chevron design : Flat :  
Machine Rolled DiaCut : NO  
Lock/Clasp : 14kt Gold



**Inside Diameter 66.0mm**

**Thickness: ~ 3.0 mm**

**Stone Type:**

We have 1 pcs in stock as of  
4/18/2025 4:08:30 PM

**Style Code: O008-265**

**Approximate Weight 4.8 g**

**Description :**

Bangle Women 7 Days : YL : 4  
gauge : Size 6.5 : X or Star  
design : Flat : Machine Rolled  
DiaCut : NO Lock/Clasp : 14kt  
Gold



**Inside Diameter 55.0mm**

**Thickness: 4.0 mm ~ 4.0 mm**

**Stone Type:**

We have 0 pcs in stock as of  
4/18/2025 4:08:30 PM

**Style Code: O008-270**

**Approximate Weight 5.1 g**

**Description :**

Bangle Women 7 Days : YL : 4  
gauge : Size 7 : X or Star  
design : Flat : Machine Rolled  
DiaCut : NO Lock/Clasp : 14kt  
Gold



**Inside Diameter 60.0mm**

**Thickness: 4.0 mm ~ 4.0 mm**

**Stone Type:**

We have 0 pcs in stock as of  
4/18/2025 4:08:30 PM





## I.G.M. Corporation

Incas Gold Mine Corporation  
650 South Hill Street Suite #218  
Los Angeles, CA 90014  
Tel: (213)627-8916 Fax: (213)627-1990  
www.incasgoldmine.com email@incasgoldmine.com

### Order by Fax or Email

Please include the **Style Code** and the quantity of each style and fax or email the order to us.  
For an optional order form, please visit our website, [www.incasgoldmine.com/forms](http://www.incasgoldmine.com/forms)

Fax: (213)627-1990

email: [order@incasgoldmine.com](mailto:order@incasgoldmine.com)

Some items are NOT to Scale. View the Dimensions for an accurate measurement.

#### Style Code: O008-275

Approximate Weight 6.2 g

##### Description :

Bangle Women 7 Days : YL : 4  
gauge : Size 7.5 : X or Star  
design : Flat : Machine Rolled  
DiaCut : NO Lock/Clasp : 14kt  
Gold

Inside Diameter 63.0mm

Thickness: 4.0 mm ~ 4.0 mm

Stone Type:

We have 0 pcs in stock as of  
4/18/2025 4:08:30 PM



#### Style Code: O008-280

Approximate Weight 7.6 g

##### Description :

Bangle Women 7 Days : YL : 4  
gauge : Size 8 : X or Star  
design : Flat : Machine Rolled  
DiaCut : NO Lock/Clasp : 14kt  
Gold

Inside Diameter 66.0mm

Thickness: 4.0 mm ~ 4.0 mm

Stone Type:

We have 0 pcs in stock as of  
4/18/2025 4:08:30 PM



#### Style Code: O008-465

Approximate Weight 6.1 g

##### Description :

Bangle Women 7 Days : YL : 4  
gauge : Size 6.5 : X or Star  
design : Flat : Machine Rolled  
DiaCut : NO Lock/Clasp : 14kt  
Gold

Inside Diameter 55.0mm

Thickness: 4.0 mm ~ 4.0 mm

Stone Type:

We have 0 pcs in stock as of  
4/18/2025 4:08:30 PM



#### Style Code: O008-470

Approximate Weight 44.1 g

##### Description :

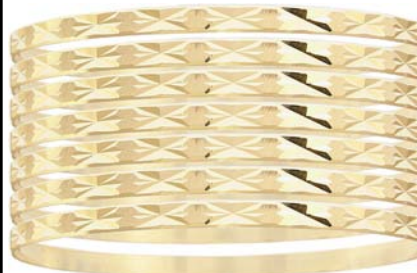
Bangle Women 7 Days : YL : 4  
gauge : Size 7 : X or Star  
design : Flat : Machine Rolled  
DiaCut : NO Lock/Clasp : 14kt  
Gold

Inside Diameter 60.0mm

Thickness: 4.0 mm ~ 4.0 mm

Stone Type:

We have 5 pcs in stock as of  
4/18/2025 4:08:30 PM



#### Style Code: O008-475

Approximate Weight 46.7 g

##### Description :

Bangle Women 7 Days : YL : 4  
gauge : Size 7.5 : X or Star  
design : Flat : Machine Rolled  
DiaCut : NO Lock/Clasp : 14kt  
Gold

Inside Diameter 63.0mm

Thickness: 4.0 mm ~ 4.0 mm

Stone Type:

We have 6 pcs in stock as of  
4/18/2025 4:08:30 PM



#### Style Code: O008-480

Approximate Weight 46.5 g

##### Description :

Bangle Women 7 Days : YL : 4  
gauge : Size 8 : X or Star  
design : Flat : Machine Rolled  
DiaCut : NO Lock/Clasp : 14kt  
Gold

Inside Diameter 66.0mm

Thickness: 4.0 mm ~ 4.0 mm

Stone Type:

We have 6 pcs in stock as of  
4/18/2025 4:08:30 PM



#### Style Code: O009-21H

Approximate Weight 6.9 g

##### Description :

Bangle Women Slip-on : YL : 5  
gauge : Size 6.5 : X or Star  
design : Flat : Machine Rolled  
DiaCut : NO Lock/Clasp : 14kt  
Gold

Inside Diameter 55.0mm

Thickness: 5.0 mm ~ 5.0 mm

Stone Type:

We have 1 pcs in stock as of  
4/18/2025 4:08:30 PM



#### Style Code: O009-265

Approximate Weight 6.9 g

##### Description :

Bangle Women 7 Days : YL : 5  
gauge : Size 6.5 : X or Star  
design : Flat : Machine Rolled  
DiaCut : NO Lock/Clasp : 14kt  
Gold

Inside Diameter 55.0mm

Thickness: 5.0 mm ~ 5.0 mm

Stone Type:

We have 0 pcs in stock as of  
4/18/2025 4:08:30 PM





## I.G.M. Corporation

Incas Gold Mine Corporation  
650 South Hill Street Suite #218  
Los Angeles, CA 90014  
Tel: (213)627-8916 Fax: (213)627-1990  
www.incsgoldmine.com email@incsgoldmine.com

### Order by Fax or Email

Please include the **Style Code** and the quantity of each style and fax or email the order to us.  
For an optional order form, please visit our website, [www.incsgoldmine.com/forms](http://www.incsgoldmine.com/forms)

**Fax: (213)627-1990 email: order@incsgoldmine.com**  
Some items are NOT to Scale. View the Dimensions for an accurate measurement.

#### Style Code: 0009-270

Approximate Weight 48.9 g

##### Description :

Bangle Women 7 Days : YL : 5  
gauge : Size 7 : X or Star  
design : Flat : Machine Rolled  
DiaCut : NO Lock/Clasp : 14kt  
Gold

Inside Diameter 60.0mm

Thickness: 5.0 mm ~ 5.0 mm

Stone Type:

We have 0 pcs in stock as of  
4/18/2025 4:08:30 PM



#### Style Code: 0009-275

Approximate Weight 53.3 g

##### Description :

Bangle Women 7 Days : YL : 5  
gauge : Size 7.5 : X or Star  
design : Flat : Machine Rolled  
DiaCut : NO Lock/Clasp : 14kt  
Gold

Inside Diameter 63.0mm

Thickness: 5.0 mm ~ 5.0 mm

Stone Type:

We have 6 pcs in stock as of  
4/18/2025 4:08:30 PM



#### Style Code: 0009-280

Approximate Weight 54.5 g

##### Description :

Bangle Women 7 Days : YL : 5  
gauge : Size 8 : X or Star  
design : Flat : Machine Rolled  
DiaCut : NO Lock/Clasp : 14kt  
Gold

Inside Diameter 66.0mm

Thickness: 5.0 mm ~ 5.0 mm

Stone Type:

We have 2 pcs in stock as of  
4/18/2025 4:08:30 PM



#### Style Code: 0009-365

Approximate Weight 7.5 g

##### Description :

Bangle Women 7 Days : YL : 6  
gauge : Size 6.5 : X or Star  
design : Flat : Machine Rolled  
DiaCut : NO Lock/Clasp : 14kt  
Gold

Inside Diameter 55.0mm

Thickness: 6.0 mm ~ 6.0 mm

Stone Type:

We have 0 pcs in stock as of  
4/18/2025 4:08:30 PM



#### Style Code: 0009-370

Approximate Weight 59.8 g

##### Description :

Bangle Women 7 Days : YL : 6  
gauge : Size 7 : X or Star  
design : Flat : Machine Rolled  
DiaCut : NO Lock/Clasp : 14kt  
Gold

Inside Diameter 60.0mm

Thickness: 6.0 mm ~ 6.0 mm

Stone Type:

We have 1 pcs in stock as of  
4/18/2025 4:08:30 PM



#### Style Code: 0009-375

Approximate Weight 60.2 g

##### Description :

Bangle Women 7 Days : YL : 6  
gauge : Size 7.5 : X or Star  
design : Flat : Machine Rolled  
DiaCut : NO Lock/Clasp : 14kt  
Gold

Inside Diameter 63.0mm

Thickness: 6.0 mm ~ 6.0 mm

Stone Type:

We have 0 pcs in stock as of  
4/18/2025 4:08:30 PM



#### Style Code: 0009-380

Approximate Weight 58.8 g

##### Description :

Bangle Women 7 Days : YL : 6  
gauge : Size 8 : X or Star  
design : Flat : Machine Rolled  
DiaCut : NO Lock/Clasp : 14kt  
Gold

Inside Diameter 66.0mm

Thickness: 6.0 mm ~ 6.0 mm

Stone Type:

We have 1 pcs in stock as of  
4/18/2025 4:08:30 PM



#### Style Code: 0009-480

Approximate Weight 8.2 g

##### Description :

Bangle Women Slip-on : YL : 6  
gauge : Size 8 : X or Star  
design : Flat : Machine Rolled  
DiaCut : NO Lock/Clasp : 14kt  
Gold

Inside Diameter 66.0mm

Thickness: 6.0 mm ~ 6.0 mm

Stone Type:

We have 3 pcs in stock as of  
4/18/2025 4:08:30 PM





## I.G.M. Corporation

Incas Gold Mine Corporation  
650 South Hill Street Suite #218  
Los Angeles, CA 90014  
Tel: (213)627-8916 Fax: (213)627-1990  
www.incsgoldmine.com email@incsgoldmine.com

### Order by Fax or Email

Please include the **Style Code** and the quantity of each style and fax or email the order to us.  
For an optional order form, please visit our website, [www.incsgoldmine.com/forms](http://www.incsgoldmine.com/forms)

**Fax: (213)627-1990 email: order@incsgoldmine.com**  
Some items are NOT to Scale. View the Dimensions for an accurate measurement.



**Style Code: 0010-165**

**Approximate Weight 8.5 g**

**Description :**

Bangle Women 7 Days : YL : 6  
gauge : Size 6.5 : X or Star  
design : Flat : Machine Rolled  
DiaCut : NO Lock/Clasp : 14kt  
Gold

**Inside Diameter 55.0mm**

**Thickness: 6.0 mm ~ 6.0 mm**

**Stone Type:**

**We have 0 pcs in stock as of  
4/18/2025 4:08:30 PM**



**Style Code: 0010-170**

**Approximate Weight 59.0 g**

**Description :**

Bangle Women 7 Days : YL : 6  
gauge : Size 6 : X or Star  
design : Flat : Machine Rolled  
DiaCut : NO Lock/Clasp : 14kt  
Gold

**Inside Diameter 60.0mm**

**Thickness: 6.0 mm ~ 6.0 mm**

**Stone Type:**

**We have 1 pcs in stock as of  
4/18/2025 4:08:30 PM**



**Style Code: 0010-175**

**Approximate Weight 59.4 g**

**Description :**

Bangle Women 7 Days : YL : 6  
gauge : Size 7.5 : X or Star  
design : Flat : Machine Rolled  
DiaCut : NO Lock/Clasp : 14kt  
Gold

**Inside Diameter 63.0mm**

**Thickness: 6.0 mm ~ 6.0 mm**

**Stone Type:**

**We have 1 pcs in stock as of  
4/18/2025 4:08:30 PM**



**Style Code: 0010-180**

**Approximate Weight 59.0 g**

**Description :**

Bangle Women 7 Days : YL : 6  
gauge : Size 8 : X or Star  
design : Flat : Machine Rolled  
DiaCut : NO Lock/Clasp : 14kt  
Gold

**Inside Diameter 66.0mm**

**Thickness: 6.0 mm ~ 6.0 mm**

**Stone Type:**

**We have 2 pcs in stock as of  
4/18/2025 4:08:30 PM**



**Style Code: 0010-265**

**Approximate Weight 75.0 g**

**Description :**

Bangle Women 7 Days : YL : 8  
gauge : Size 6.5 : X or Star  
design : Flat : Machine Rolled  
DiaCut : NO Lock/Clasp : 14kt  
Gold

**Inside Diameter 55.0mm**

**Thickness: 8.0 mm ~ 8.0 mm**

**Stone Type:**

**We have 0 pcs in stock as of  
4/18/2025 4:08:30 PM**



**Style Code: 0010-270**

**Approximate Weight 77.4 g**

**Description :**

Bangle Women 7 Days : YL : 8  
gauge : Size 7 : X or Star  
design : Flat : Machine Rolled  
DiaCut : NO Lock/Clasp : 14kt  
Gold

**Inside Diameter 60.0mm**

**Thickness: 8.0 mm ~ 8.0 mm**

**Stone Type:**

**We have 5 pcs in stock as of  
4/18/2025 4:08:30 PM**



**Style Code: 0010-275**

**Approximate Weight 77.8 g**

**Description :**

Bangle Women 7 Days : YL : 8  
gauge : Size 7.5 : X or Star  
design : Flat : Machine Rolled  
DiaCut : NO Lock/Clasp : 14kt  
Gold

**Inside Diameter 63.0mm**

**Thickness: 8.0 mm ~ 8.0 mm**

**Stone Type:**

**We have 4 pcs in stock as of  
4/18/2025 4:08:30 PM**



**Style Code: 0010-280**

**Approximate Weight 76.2 g**

**Description :**

Bangle Women 7 Days : YL : 8  
gauge : Size 8 : X or Star  
design : Flat : Machine Rolled  
DiaCut : NO Lock/Clasp : 14kt  
Gold

**Inside Diameter 66.0mm**

**Thickness: 8.0 mm ~ 8.0 mm**

**Stone Type:**

**We have 2 pcs in stock as of  
4/18/2025 4:08:30 PM**

4/18/2025

Women's Bangles PAGE 11

All Items are subject to availability. Some of the items maybe discontinued. We reserve the right to cancel or void any customer orders. Allow us 24 to 48 hours to pull out your order from our inventory. All metal prices will be based on Lodon PM fix at the day of the shipment.





## I.G.M. Corporation

Incas Gold Mine Corporation  
650 South Hill Street Suite #218  
Los Angeles, CA 90014  
Tel: (213)627-8916 Fax: (213)627-1990  
www.incasgoldmine.com email@incasgoldmine.com

### Order by Fax or Email

Please include the **Style Code** and the quantity of each style and fax or email the order to us.  
For an optional order form, please visit our website, [www.incasgoldmine.com/forms](http://www.incasgoldmine.com/forms)

Fax: (213)627-1990

email: [order@incasgoldmine.com](mailto:order@incasgoldmine.com)

Some items are NOT to Scale. View the Dimensions for an accurate measurement.

#### Style Code: O010-365

Approximate Weight 11.0 g

##### Description :

Bangle Women 7 Days : YL : 8  
gauge : Size 6.5 : Leaves  
design : Flat : Machine Rolled  
DiaCut : NO Lock/Clasp : 14kt  
Gold

Inside Diameter 55.0mm

Thickness: 8.0 mm ~ 8.0 mm

Stone Type:

We have 0 pcs in stock as of  
4/18/2025 4:08:30 PM



#### Style Code: O010-370

Approximate Weight 10.7 g

##### Description :

Bangle Women 7 Days : YL : 8  
gauge : Size 7 : X or Star  
Double design : Flat : Machine  
Rolled DiaCut : NO  
Lock/Clasp : 14kt Gold

Inside Diameter 60.0mm

Thickness: 8.0 mm ~ 8.0 mm

Stone Type:

We have 0 pcs in stock as of  
4/18/2025 4:08:30 PM

#### Style Code: O010-375

Approximate Weight 80.2 g

##### Description :

Bangle Women 7 Days : YL : 8  
gauge : Size 7.5 : X or Star  
Double design : Flat : Machine  
Rolled DiaCut : NO  
Lock/Clasp : 14kt Gold

Inside Diameter 63.0mm

Thickness: 8.0 mm ~ 8.0 mm

Stone Type:

We have 0 pcs in stock as of  
4/18/2025 4:08:30 PM



#### Style Code: O010-380

Approximate Weight 10.6 g

##### Description :

Bangle Women 7 Days : YL : 8  
gauge : Size 8 : X or Star  
Double design : Flat : Machine  
Rolled DiaCut : NO  
Lock/Clasp : 14kt Gold

Inside Diameter 66.0mm

Thickness: 8.0 mm ~ 8.0 mm

Stone Type:

We have 0 pcs in stock as of  
4/18/2025 4:08:30 PM



#### Style Code: O010-465

Approximate Weight 17.0 g

##### Description :

Bangle Women Slip-on : YL :  
12 gauge : Size 6.5 : X or Star  
design : Flat : Machine Rolled  
DiaCut : NO Lock/Clasp : 14kt  
Gold

Inside Diameter 55.0mm

Thickness: 12.0 mm ~ 12.0 mm

Stone Type:

We have 0 pcs in stock as of  
4/18/2025 4:08:30 PM



#### Style Code: O010-470

Approximate Weight 16.4 g

##### Description :

Bangle Women Slip-on : YL :  
12 gauge : Size 7 : X or Star  
design : Flat : Machine Rolled  
DiaCut : NO Lock/Clasp : 14kt  
Gold

Inside Diameter 60.0mm

Thickness: 12.0 mm ~ 12.0 mm

Stone Type:

We have 0 pcs in stock as of  
4/18/2025 4:08:30 PM



#### Style Code: O010-475

Approximate Weight 17.0 g

##### Description :

Bangle Women Slip-on : YL :  
12 gauge : Size 7.5 : X or Star  
design : Flat : Machine Rolled  
DiaCut : NO Lock/Clasp : 14kt  
Gold

Inside Diameter 63.0mm

Thickness: 12.0 mm ~ 12.0 mm

Stone Type:

We have 0 pcs in stock as of  
4/18/2025 4:08:30 PM



#### Style Code: O010-480

Approximate Weight 17.0 g

##### Description :

Bangle Women Slip-on : YL :  
12 gauge : Size 8 : X or Star  
design : Flat : Machine Rolled  
DiaCut : NO Lock/Clasp : 14kt  
Gold

Inside Diameter 66.0mm

Thickness: 12.0 mm ~ 12.0 mm

Stone Type:

We have 0 pcs in stock as of  
4/18/2025 4:08:30 PM







## I.G.M. Corporation

Incas Gold Mine Corporation  
650 South Hill Street Suite #218  
Los Angeles, CA 90014  
Tel: (213)627-8916 Fax: (213)627-1990  
www.incasgoldmine.com email@incasgoldmine.com

### Order by Fax or Email

Please include the **Style Code** and the quantity of each style and fax or email the order to us.  
For an optional order form, please visit our website, [www.incasgoldmine.com/forms](http://www.incasgoldmine.com/forms)

**Fax: (213)627-1990 email: order@incasgoldmine.com**

Some items are NOT to Scale. View the Dimensions for an accurate measurement.

#### Style Code: O011-386

Approximate Weight 46.2 g

##### Description :

Bangle Women 7 Days : TC : 4  
gauge : Size 7.0 : X or Star  
design : Concave : Machine  
Rolled DiaCut : NO  
Lock/Clasp : 14kt Gold



Inside Diameter 64.0mm

Thickness: 4.0 mm ~ 65.0 mm

Stone Type:

We have 0 pcs in stock as of  
4/18/2025 4:08:30 PM

#### Style Code: O011-387

Approximate Weight 45.0 g

##### Description :

Bangle Women 7 Days : TC : 4  
gauge : Size 7.5 : X or Star  
design : Concave : Machine  
Rolled DiaCut : NO  
Lock/Clasp : 14kt Gold



Inside Diameter 68.0mm

Thickness: 4.0 mm ~ 69.0 mm

Stone Type:

We have 0 pcs in stock as of  
4/18/2025 4:08:30 PM

#### Style Code: O011-388

Approximate Weight 46.2 g

##### Description :

Bangle Women 7 Days : TC : 4  
gauge : Size 8.0 : X or Star  
design : Concave : Machine  
Rolled DiaCut : NO  
Lock/Clasp : 14kt Gold



Inside Diameter 71.0mm

Thickness: 4.0 mm ~ 72.0 mm

Stone Type:

We have 0 pcs in stock as of  
4/18/2025 4:08:30 PM

#### Style Code: O011-486

Approximate Weight 42.1 g

##### Description :

Bangle Women 7 Days : TC : 4  
gauge : Size 7.0 : X or Star  
design : Concave : Machine  
Rolled DiaCut : NO  
Lock/Clasp : 14kt Gold



Inside Diameter 64.0mm

Thickness: 4.0 mm ~ 65.0 mm

Stone Type:

We have 0 pcs in stock as of  
4/18/2025 4:08:30 PM

#### Style Code: O011-487

Approximate Weight 45.0 g

##### Description :

Bangle Women 7 Days : TC : 4  
gauge : Size 7.5 : X or Star  
design : Concave : Machine  
Rolled DiaCut : NO  
Lock/Clasp : 14kt Gold



Inside Diameter 68.0mm

Thickness: 4.0 mm ~ 69.0 mm

Stone Type:

We have 0 pcs in stock as of  
4/18/2025 4:08:30 PM

#### Style Code: O011-488

Approximate Weight 48.0 g

##### Description :

Bangle Women 7 Days : TC : 4  
gauge : Size 8.0 : X or Star  
design : Concave : Machine  
Rolled DiaCut : NO  
Lock/Clasp : 14kt Gold



Inside Diameter 71.0mm

Thickness: 4.0 mm ~ 72.0 mm

Stone Type:

We have 0 pcs in stock as of  
4/18/2025 4:08:30 PM

#### Style Code: O012-570

Approximate Weight 7.2 g

##### Description :

Bangle Women Hollow : TC :  
Size 7 : Heart design : Hollow  
DiaCut : Click-Press Lock :  
14kt Gold



Inside Diameter 60.0mm

Thickness: 5.0 mm ~ 5.0 mm

Stone Type:

We have 0 pcs in stock as of  
4/18/2025 4:08:30 PM

#### Style Code: O012-575

Approximate Weight 7.5 g

##### Description :

Bangle Women Hollow : TC :  
Size 7.5 : Heart design :  
Hollow DiaCut : Click-Press  
Lock : 14kt Gold



Inside Diameter 63.0mm

Thickness: 5.0 mm ~ 5.0 mm

Stone Type:

We have 0 pcs in stock as of  
4/18/2025 4:08:30 PM

4/18/2025

Women's Bangles PAGE 13

All Items are subject to availability. Some of the items maybe discontinued. We reserve the right to cancel or void any customer orders. Allow us 24 to 48 hours to pull out your order from our inventory. All metal prices will be based on Lodon PM fix at the day of the shipment.



## I.G.M. Corporation

Incas Gold Mine Corporation  
650 South Hill Street Suite #218  
Los Angeles, CA 90014  
Tel: (213)627-8916 Fax: (213)627-1990  
www.incasgoldmine.com email@incasgoldmine.com

### Order by Fax or Email

Please include the **Style Code** and the quantity of each style and fax or email the order to us.  
For an optional order form, please visit our website, [www.incasgoldmine.com/forms](http://www.incasgoldmine.com/forms)

**Fax: (213)627-1990 email: order@incasgoldmine.com**

Some items are NOT to Scale. View the Dimensions for an accurate measurement.

#### Style Code: 0012-670

Approximate Weight 7.5 g

##### Description :

Bangle Women Hollow : TC :  
Size 7 : Flower design :  
Hollow DiaCut : Click-Press  
Lock : 14kt Gold



Inside Diameter 60.0mm

Thickness: 5.0 mm ~ 5.0 mm

Stone Type:

We have 0 pcs in stock as of  
4/18/2025 4:08:30 PM

#### Style Code: 0012-675

Approximate Weight 7.8 g

##### Description :

Bangle Women Hollow : TC :  
Size 7.5 : Flower design :  
Hollow DiaCut : Click-Press  
Lock : 14kt Gold



Inside Diameter 63.0mm

Thickness: 5.0 mm ~ 5.0 mm

Stone Type:

We have 0 pcs in stock as of  
4/18/2025 4:08:30 PM

#### Style Code: 0013-175

Approximate Weight 9.0 g

##### Description :

Bangle Women Hollow : TC :  
Size 7.5 : Heart design :  
Hollow DiaCut : Click-Press  
Lock : 14kt Gold



Inside Diameter 63.0mm

Thickness: 6.0 mm ~ 6.0 mm

Stone Type:

We have 0 pcs in stock as of  
4/18/2025 4:08:30 PM

#### Style Code: 0013-180

Approximate Weight 9.9 g

##### Description :

Bangle Women Hollow : TC :  
Size 8 : Heart design : Hollow  
DiaCut : Click-Press Lock :  
14kt Gold



Inside Diameter 66.0mm

Thickness: 6.0 mm ~ 6.0 mm

Stone Type:

We have 0 pcs in stock as of  
4/18/2025 4:08:30 PM

#### Style Code: 0014-200

Approximate Weight 15.0 g

##### Description :

Bangle Women Open Bottom :  
TC : 1.5mm gauge : Size 7 :  
Flower Guadalupe design :  
Hollow  
Stamping Stone : NO  
Lock/Clasp : 14kt Gold



Inside Diameter 45.0mm

Thickness: 23.0 mm ~ 28.0 mm

Stone Type:

We have 0 pcs in stock as of  
4/18/2025 4:08:30 PM

#### Style Code: 0014-470

Approximate Weight 6.7 g

##### Description :

Bangle Women Hollow : YL :  
Size 7 : Hollow Plain DiaCut :  
Click-Press Lock : 14kt Gold



Inside Diameter 60.0mm

Thickness: 5.0 mm ~ 5.0 mm

Stone Type:

We have 0 pcs in stock as of  
4/18/2025 4:08:30 PM

#### Style Code: 0014-675

Approximate Weight 8.3 g

##### Description :

Bangle Women Hollow : YL :  
Size 7.5 : Hollow Plain DiaCut :  
Click-Press Lock : 14kt Gold



Inside Diameter 63.0mm

Thickness: 6.0 mm ~ 6.0 mm

Stone Type:

We have 0 pcs in stock as of  
4/18/2025 4:08:30 PM

#### Style Code: 0014-770

Approximate Weight 21.0 g

##### Description :

Bangle Women 7 Days  
Bunched : YL : Size 7.0 : X or  
Star design : Machine Rolled  
DiaCut : Click-Press Lock :  
14kt Gold



Inside Diameter 58.0mm

Thickness: 9.0 mm ~ 9.0 mm

Stone Type:

We have 0 pcs in stock as of  
4/18/2025 4:08:30 PM



## I.G.M. Corporation

Incas Gold Mine Corporation  
650 South Hill Street Suite #218  
Los Angeles, CA 90014  
Tel: (213)627-8916 Fax: (213)627-1990  
www.incasgoldmine.com email@incasgoldmine.com

### Order by Fax or Email

Please include the **Style Code** and the quantity of each style and fax or email the order to us.  
For an optional order form, please visit our website, [www.incasgoldmine.com/forms](http://www.incasgoldmine.com/forms)

**Fax: (213)627-1990 email: order@incasgoldmine.com**

Some items are NOT to Scale. View the Dimensions for an accurate measurement.



**Style Code: 0014-775**

**Approximate Weight 20.2 g**

**Description :**

Bangle Women 7 Days  
Bunched : YL : Size 7.5 : X or  
Star design : Machine Rolled  
DiaCut : Click-Press Lock :  
14kt Gold

**Inside Diameter 63.0mm**

**Thickness: 9.0 mm ~ 9.0 mm**

**Stone Type:**

**We have 3 pcs in stock as of  
4/18/2025 4:08:30 PM**



**Style Code: 0014-780**

**Approximate Weight 20.4 g**

**Description :**

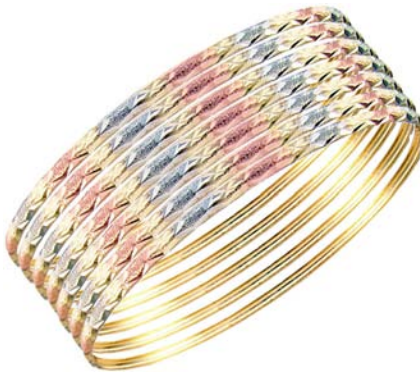
Bangle Women 7 Days  
Bunched : YL : Size 8.0 : X or  
Star design : Machine Rolled  
DiaCut : Click-Press Lock :  
14kt Gold

**Inside Diameter 66.0mm**

**Thickness: 9.0 mm ~ 9.0 mm**

**Stone Type:**

**We have 2 pcs in stock as of  
4/18/2025 4:08:30 PM**



**Style Code: 0015-170**

**Approximate Weight 17.5 g**

**Description :**

Bangle Women 7 Days : TC :  
Size 7 : X or Star design :  
Machine Rolled Satin DiaCut :  
NO Lock/Clasp : 14kt Gold

**Inside Diameter 67.0mm**

**Thickness: 2.5 mm ~ 18.0 mm**

**Stone Type:**

**We have 0 pcs in stock as of  
4/18/2025 4:08:30 PM**



**Style Code: 0015-175**

**Approximate Weight 15.5 g**

**Description :**

Bangle Women 7 Days : TC :  
Size 7.5 : X or Star design :  
Machine Rolled Satin DiaCut :  
NO Lock/Clasp : 14kt Gold

**Inside Diameter 67.0mm**

**Thickness: 2.5 mm ~ 18.0 mm**

**Stone Type:**

**We have 0 pcs in stock as of  
4/18/2025 4:08:30 PM**



**Style Code: 0015-180**

**Approximate Weight 16.3 g**

**Description :**

Bangle Women 7 Days : :  
Size 8 : X or Star design :  
Machine Rolled Satin DiaCut :  
NO Lock/Clasp : 14kt Gold

**Inside Diameter 73.0mm**

**Thickness: 2.5 mm ~ 2.5 mm**

**Stone Type:**

**We have 0 pcs in stock as of  
4/18/2025 4:08:30 PM**



**Style Code: 0015-370**

**Approximate Weight 26.4 g**

**Description :**

Bangle Women 7 Days : :  
Size 7 : Heart X or Star  
design : Machine Rolled Satin  
DiaCut : NO Lock/Clasp : 14kt  
Gold

**Inside Diameter 67.0mm**

**Thickness: 4.0 mm ~ 4.0 mm**

**Stone Type:**

**We have 0 pcs in stock as of  
4/18/2025 4:08:30 PM**



**Style Code: 0015-375**

**Approximate Weight 28.3 g**

**Description :**

Bangle Women 7 Days : TC :  
Size 7.5 : Heart X or Star  
design : Machine Rolled Satin  
DiaCut : NO Lock/Clasp : 14kt  
Gold

**Inside Diameter 70.0mm**

**Thickness: 4.0 mm ~ 4.0 mm**

**Stone Type:**

**We have 0 pcs in stock as of  
4/18/2025 4:08:30 PM**



**Style Code: 0015-380**

**Approximate Weight 29.6 g**

**Description :**

Bangle Women 7 Days : :  
Size 8 : Heart X or Star  
design : Machine Rolled Satin  
DiaCut : NO Lock/Clasp : 14kt  
Gold

**Inside Diameter 73.0mm**

**Thickness: 4.0 mm ~ 4.0 mm**

**Stone Type:**

**We have 0 pcs in stock as of  
4/18/2025 4:08:30 PM**





## I.G.M. Corporation

Incas Gold Mine Corporation  
650 South Hill Street Suite #218  
Los Angeles, CA 90014  
Tel: (213)627-8916 Fax: (213)627-1990  
www.incasgoldmine.com email@incasgoldmine.com

### Order by Fax or Email

Please include the **Style Code** and the quantity of each style and fax or email the order to us.  
For an optional order form, please visit our website, [www.incasgoldmine.com/forms](http://www.incasgoldmine.com/forms)

**Fax: (213)627-1990 email: order@incasgoldmine.com**  
Some items are NOT to Scale. View the Dimensions for an accurate measurement.



**Style Code: 0015-670**

**Approximate Weight 30.1 g**

**Description :**

Bangle Women 7 Days : :  
Size 7 : Heart X or Star  
design : Machine Rolled Satin  
DiaCut : NO Lock/Clasp : 14kt  
Gold

**Inside Diameter 67.0mm**

**Thickness: 5.5 mm ~ 39.0 mm**

**Stone Type:**

**We have 0 pcs in stock as of  
4/18/2025 4:08:30 PM**



**Style Code: 0015-675**

**Approximate Weight 32.9 g**

**Description :**

Bangle Women 7 Days : :  
Size 7 : Heart X or Star  
design : Machine Rolled Satin  
DiaCut : NO Lock/Clasp : 14kt  
Gold

**Inside Diameter 70.0mm**

**Thickness: 5.5 mm ~ 39.0 mm**

**Stone Type:**

**We have 0 pcs in stock as of  
4/18/2025 4:08:30 PM**



**Style Code: 0015-680**

**Approximate Weight 35.3 g**

**Description :**

Bangle Women Hollow : :  
Size 8 : Heart X or Star  
design : Machine Rolled Satin  
DiaCut : NO Lock/Clasp : 14kt  
Gold

**Inside Diameter 73.0mm**

**Thickness: 5.5 mm ~ 39.0 mm**

**Stone Type:**

**We have 0 pcs in stock as of  
4/18/2025 4:08:30 PM**



**Style Code: 0015-770**

**Approximate Weight 4.6 g**

**Description :**

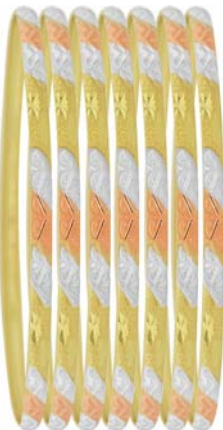
Bangle Women Hollow : WT :  
Size 7 : Leaves design :  
Hollow Satin Crystal Cut :  
Spring Tension Lock : 14kt  
Gold

**Inside Diameter 60.0mm**

**Thickness: 4.0 mm ~ 4.0 mm**

**Stone Type:**

**We have 8 pcs in stock as of  
4/18/2025 4:08:30 PM**



**Style Code: 0015-870**

**Approximate Weight 22.6 g**

**Description :**

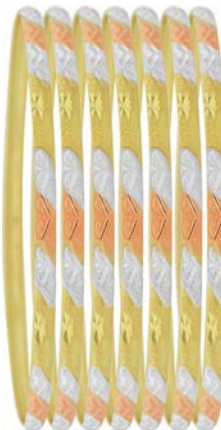
Bangle Women 7 Days : TC :  
Size 7.0 : Heart design :  
Machine Rolled Satin DiaCut :  
NO Lock/Clasp : 14kt Gold

**Inside Diameter 65.0mm**

**Thickness: 3.0 mm ~ 3.0 mm**

**Stone Type:**

**We have 0 pcs in stock as of  
4/18/2025 4:08:30 PM**



**Style Code: 0015-880**

**Approximate Weight 25.2 g**

**Description :**

Bangle Women 7 Days : TC :  
Size 8.0 : Heart design :  
Machine Rolled Satin DiaCut :  
NO Lock/Clasp : 14kt Gold

**Inside Diameter 72.0mm**

**Thickness: 3.0 mm ~ 3.0 mm**

**Stone Type:**

**We have 0 pcs in stock as of  
4/18/2025 4:08:30 PM**



**Style Code: 0016-013**

**Approximate Weight 11.3 g**

**Description :**

Bangle Women : YL : 9.3  
gauge : Bone chain design :  
Hollow Crystal Cut  
Laser : CZ White (Apr) : 14kt  
Gold

**Inside Diameter**

**Thickness: 9.6 mm ~ 67.4 mm**

**Stone Type: CZ**

**We have 0 pcs in stock as of  
4/18/2025 4:08:30 PM**



**Style Code: 0016-670**

**Approximate Weight 4.3 g**

**Description :**

Bangle Women Hollow : WT :  
Size 7 : X or Star design :  
Hollow Crystal Cut : Spring  
Tension Lock : 14kt Gold

**Inside Diameter 60.0mm**

**Thickness: 4.0 mm ~ 4.0 mm**

**Stone Type:**

**We have 1 pcs in stock as of  
4/18/2025 4:08:30 PM**





**I.G.M. Corporation**  
Incas Gold Mine Corporation  
650 South Hill Street Suite #218  
Los Angeles, CA 90014  
Tel: (213)627-8916 Fax: (213)627-1990  
www.incasgoldmine.com email@incasgoldmine.com

**Order by Fax or Email**

Please include the **Style Code** and the quantity of each style and fax or email the order to us.  
For an optional order form, please visit our website, [www.incasgoldmine.com/forms](http://www.incasgoldmine.com/forms)

**Fax: (213)627-1990 email: order@incasgoldmine.com**

Some items are NOT to Scale. View the Dimensions for an accurate measurement.

**Style Code: O016-780**

**Approximate Weight 5.2 g**

**Description :**

Bangle Women Hollow : WT :  
Size 8 : Hollow Plain : Spring  
Tension Lock : 14kt Gold



**Inside Diameter 65.0mm**

**Thickness: 4.0 mm ~ 4.0 mm**

**Stone Type:**

**We have 12 pcs in stock as of  
4/18/2025 4:08:30 PM**

**Style Code: O016-870**

**Approximate Weight 12.9 g**

**Description :**

Bangle Women Hollow : WT :  
Size 7 : Hollow Plain : Click-  
Press Lock : 14kt Gold



**Inside Diameter 60.0mm**

**Thickness: 5.0 mm ~ 5.0 mm**

**Stone Type:**

**We have 3 pcs in stock as of  
4/18/2025 4:08:30 PM**

**Style Code: O016-970**

**Approximate Weight 6.3 g**

**Description :**

Bangle Women Hollow : WT :  
Size 7 : Hollow Plain : Spring  
Tension Lock : 14kt Gold



**Inside Diameter 60.0mm**

**Thickness: 5.0 mm ~ 5.0 mm**

**Stone Type:**

**We have 4 pcs in stock as of  
4/18/2025 4:08:30 PM**

**Style Code: O016-980**

**Approximate Weight 6.9 g**

**Description :**

Bangle Women Hollow : WT :  
Size 8 : Hollow Plain : Spring  
Tension Lock : 14kt Gold



**Inside Diameter 65.0mm**

**Thickness: 5.0 mm ~ 5.0 mm**

**Stone Type:**

**We have 13 pcs in stock as of  
4/18/2025 4:08:30 PM**

**Style Code: O017-001**

**Approximate Weight 9.7 g**

**Description :**

Bangle Women Fancy : YW :  
Size 7 : Twist design : Hollow  
Plain  
Satin : Spring Tension Lock :  
14kt Gold



**Inside Diameter 60.0mm**

**Thickness: 6.0 mm ~ 6.0 mm**

**Stone Type:**

**We have 6 pcs in stock as of  
4/18/2025 4:08:30 PM**

**Style Code: O017-002**

**Approximate Weight 5.7 g**

**Description :**

Bangle Women Fancy : YL :  
Size 7 : Lines Diagonal design :  
Hollow Satin DiaCut : Spring  
Tension Lock : 14kt Gold



**Inside Diameter 60.0mm**

**Thickness: 5.0 mm ~ 5.0 mm**

**Stone Type:**

**We have 3 pcs in stock as of  
4/18/2025 4:08:30 PM**

**Style Code: O017-003**

**Approximate Weight 7.0 g**

**Description :**

Bangle Women Fancy : YB :  
Size 7 : Hollow Stone DiaCut  
Resin (Glow in Dark) : Spring  
Tension Lock : 14kt Gold



**Inside Diameter 60.0mm**

**Thickness: 4.0 mm ~ 4.0 mm**

**Stone Type:**

**We have 6 pcs in stock as of  
4/18/2025 4:08:30 PM**

**Style Code: O017-006**

**Approximate Weight 4.6 g**

**Description :**

Bangle Women Fancy : YL :  
Size 7 : Heart design : Hollow  
Plain : Lobster Clasp : CZ  
White (Apr) : 14kt Gold



**Inside Diameter 60.0mm**

**Thickness: 2.0 mm ~ 10.0 mm**

**Stone Type: CZ**

**We have 7 pcs in stock as of  
4/18/2025 4:08:30 PM**



## I.G.M. Corporation

Incas Gold Mine Corporation  
650 South Hill Street Suite #218  
Los Angeles, CA 90014  
Tel: (213)627-8916 Fax: (213)627-1990  
www.incsgoldmine.com email@incsgoldmine.com

### Order by Fax or Email

Please include the **Style Code** and the quantity of each style and fax or email the order to us.  
For an optional order form, please visit our website, [www.incsgoldmine.com/forms](http://www.incsgoldmine.com/forms)

Fax: (213)627-1990

email: [order@incsgoldmine.com](mailto:order@incsgoldmine.com)

Some items are NOT to Scale. View the Dimensions for an accurate measurement.

#### Style Code: O017-008

Approximate Weight 10.3 g

##### Description :

Bangle Women Fancy Disco  
Chain : WT : Size 7 : Hollow  
DiaCut : Lobster Clasp : 14kt  
Gold



Inside Diameter 60.0mm

Thickness: 6.0 mm ~ 6.0 mm

Stone Type:

We have 4 pcs in stock as of  
4/18/2025 4:08:30 PM

#### Style Code: O017-009

Approximate Weight 10.6 g

##### Description :

Bangle Women Fancy Disco  
Chain : YW : Size 7 : Hollow  
DiaCut : Lobster Clasp : 14kt  
Gold



Inside Diameter 60.0mm

Thickness: 6.0 mm ~ 6.0 mm

Stone Type:

We have 3 pcs in stock as of  
4/18/2025 4:08:30 PM

#### Style Code: O017-010

Approximate Weight 11.0 g

##### Description :

Bangle Women Fancy Disco  
Chain : WT : Size 7 : Hollow  
DiaCut : Lobster Clasp : 14kt  
Gold



Inside Diameter 60.0mm

Thickness: 6.0 mm ~ 6.0 mm

Stone Type:

We have 2 pcs in stock as of  
4/18/2025 4:08:30 PM

#### Style Code: O017-011

Approximate Weight 15.5 g

##### Description :

Bangle Women Fancy : YW :  
Size 7 : Chevron design :  
Hollow DiaCut : Click-Press  
Lock : CZ White (Apr) : 14kt  
Gold



Inside Diameter 62.0mm

Thickness: 4.0 mm ~ 12.0 mm

Stone Type: CZ

We have 1 pcs in stock as of  
4/18/2025 4:08:30 PM

#### Style Code: O017-015

Approximate Weight 16.0 g

##### Description :

Bangle Women Fancy : YW :  
Size 7 : Hollow DiaCut : Click-  
Press Lock : CZ White (Apr) :  
14kt Gold



Inside Diameter 62.0mm

Thickness: 4.0 mm ~ 13.0 mm

Stone Type: CZ

We have 1 pcs in stock as of  
4/18/2025 4:08:30 PM

#### Style Code: O018-001

Approximate Weight 12.9 g

##### Description :

Bangle Women Fancy : YL :  
Size 7 : Casting DiaCut : Click-  
Press Lock : CZ White (Apr) :  
14kt Gold



Inside Diameter 62.0mm

Thickness: 2.0 mm ~ 2.0 mm

Stone Type: CZ

We have 4 pcs in stock as of  
4/18/2025 4:08:30 PM

#### Style Code: O018-002

Approximate Weight 12.8 g

##### Description :

Bangle Women Fancy : WT :  
Size 7 : Casting DiaCut : Click-  
Press Lock : CZ White (Apr) :  
14kt Gold



Inside Diameter 62.0mm

Thickness: 2.0 mm ~ 2.0 mm

Stone Type: CZ

We have 4 pcs in stock as of  
4/18/2025 4:08:30 PM

#### Style Code: O018-003

Approximate Weight 23.8 g

##### Description :

Bangle Women Fancy : WT :  
Size 7 : Casting DiaCut : Click-  
Press Lock : CZ Pearl White  
(Apr) : 14kt Gold



Inside Diameter 60.0mm

Thickness: 10.0 mm ~ 10.0 mm

Stone Type: CZ Pearl

We have 3 pcs in stock as of  
4/18/2025 4:08:30 PM

4/18/2025

Women's Bangles PAGE 18

All Items are subject to availability. Some of the items maybe discontinued. We reserve the right to cancel or void any customer orders. Allow us 24 to 48 hours to pull out your order from our inventory. All metal prices will be based on Lodon PM fix at the day of the shipment.



## I.G.M. Corporation

Incas Gold Mine Corporation  
650 South Hill Street Suite #218  
Los Angeles, CA 90014  
Tel: (213)627-8916 Fax: (213)627-1990  
www.incasgoldmine.com email@incasgoldmine.com

### Order by Fax or Email

Please include the **Style Code** and the quantity of each style and fax or email the order to us.  
For an optional order form, please visit our website, [www.incasgoldmine.com/forms](http://www.incasgoldmine.com/forms)

**Fax: (213)627-1990 email: order@incasgoldmine.com**

Some items are NOT to Scale. View the Dimensions for an accurate measurement.

#### Style Code: 0018-004

Approximate Weight 30.3 g

##### Description :

Bangle Women Fancy : YL :  
Size 7 : Casting Plain : Click-  
Press Lock : CZ White (Apr) :  
14kt Gold



Inside Diameter 62.0mm

Thickness: ~ 30.0 mm

Stone Type: CZ

We have 1 pcs in stock as of  
4/18/2025 4:08:30 PM

#### Style Code: 0018-006

Approximate Weight 35.5 g

##### Description :

Bangle Women Fancy : YW :  
Size 7 : Butterfly design :  
Casting Plain : Click-Press  
Lock : CZ White (Apr) : 14kt  
Gold



Inside Diameter 62.0mm

Thickness: 10.0 mm ~ 31.0 mm

Stone Type: CZ

We have 0 pcs in stock as of  
4/18/2025 4:08:30 PM

#### Style Code: 0018-007

Approximate Weight 36.0 g

##### Description :

Bangle Women Fancy : YL :  
Size 7 : Heart design : Casting  
Plain : Click-Press Lock : CZ  
White (Apr) : 14kt Gold



Inside Diameter 62.0mm

Thickness: 10.0 mm ~ 30.0 mm

Stone Type: CZ

We have 0 pcs in stock as of  
4/18/2025 4:08:30 PM

#### Style Code: 0018-017

Approximate Weight 11.0 g

##### Description :

Bangle Women Fancy : YW : 4  
gauge : Size 7.5 : Balance  
Bead Bangle design :  
Hollow : CZ White (Apr) :  
14kt Gold



Inside Diameter

Thickness: 4.0 mm ~ 10.0 mm

Stone Type: CZ

We have 0 pcs in stock as of  
4/18/2025 4:08:30 PM

#### Style Code: 0018-055

Approximate Weight 35.6 g

##### Description :

Bangle Women Fancy : WT :  
Size 7 : Casting Plain : Click-  
Press Lock : CZ White (Apr) :  
14kt Gold



Inside Diameter 62.0mm

Thickness: 10.0 mm ~ 30.0 mm

Stone Type: CZ

We have 4 pcs in stock as of  
4/18/2025 4:08:30 PM

#### Style Code: 0018-056

Approximate Weight 35.0 g

##### Description :

Bangle Women Fancy : WT :  
Size 7 : Butterfly design :  
Casting Plain : Click-Press  
Lock : CZ White (Apr) : 14kt  
Gold



Inside Diameter 62.0mm

Thickness: 10.0 mm ~ 31.0 mm

Stone Type: CZ

We have 0 pcs in stock as of  
4/18/2025 4:08:30 PM

#### Style Code: 0018-057

Approximate Weight 38.5 g

##### Description :

Bangle Women Fancy : WT :  
Size 7 : Heart design : Casting  
Plain : Click-Press Lock : CZ  
White (Apr) : 14kt Gold



Inside Diameter 62.0mm

Thickness: 10.0 mm ~ 30.0 mm

Stone Type: CZ

We have 1 pcs in stock as of  
4/18/2025 4:08:30 PM

#### Style Code: 0018-058

Approximate Weight 33.0 g

##### Description :

Bangle Women Fancy : WT :  
Size 7 : Casting Plain : Click-  
Press Lock : CZ White (Apr) :  
14kt Gold



Inside Diameter 62.0mm

Thickness: 10.0 mm ~ 30.0 mm

Stone Type: CZ

We have 2 pcs in stock as of  
4/18/2025 4:08:30 PM





**Style Code: 0019-003**

**Approximate Weight 7.9 g**

**Description :**

Bangle Women Adjustable :  
TC : Size 7 : Flower Heart  
design : Concave : Machine  
Rolled  
Stamping Satin DiaCut :  
Adjustable Lock : 14kt Gold



**Inside Diameter 58.0mm**

**Thickness: 8.0 mm ~ 8.0 mm**

**Stone Type:**

**We have 0 pcs in stock as of  
4/18/2025 4:08:30 PM**

**Style Code: 0019-006**

**Approximate Weight 9.0 g**

**Description :**

Bangle Women Adjustable :  
TC : Size 7 : Flower  
Guadalupe design : Concave :  
Machine Rolled  
Stamping Satin DiaCut :  
Adjustable Lock : 14kt Gold



**Inside Diameter 58.0mm**

**Thickness: ~ 10.0 mm**

**Stone Type:**

**We have 0 pcs in stock as of  
4/18/2025 4:08:30 PM**

**Style Code: 0019-007**

**Approximate Weight 10.5 g**

**Description :**

Bangle Women Adjustable :  
TC : Size 7 : Flower  
Guadalupe Scroll design :  
Concave : Machine Rolled  
Stamping Satin DiaCut :  
Adjustable Lock : 14kt Gold



**Inside Diameter 58.0mm**

**Thickness: 12.0 mm ~ 12.0 mm**

**Stone Type:**

**We have 0 pcs in stock as of  
4/18/2025 4:08:30 PM**

**Style Code: 0019-009**

**Approximate Weight 17.2 g**

**Description :**

Bangle Women Adjustable :  
TC : Size 7 : Flower TRiple  
Guadalupe Star Engraved  
design : Concave : Machine  
Rolled  
Stamping Satin DiaCut :  
Adjustable Lock : 14kt Gold



**Inside Diameter 62.0mm**

**Thickness: ~ 17.0 mm**

**Stone Type:**

**We have 0 pcs in stock as of  
4/18/2025 4:08:30 PM**

**Style Code: 0019-010**

**Approximate Weight 22.5 g**

**Description :**

Bangle Women Adjustable :  
TC : Size 7 : Flower & Heart  
Hand engraved lazer cut  
design : Concave : Machine  
Rolled  
Stamping Satin DiaCut :  
Adjustable Lock : 14kt Gold



**Inside Diameter 62.0mm**

**Thickness: 19.8 mm ~ 23.5 mm**

**Stone Type:**

**We have 0 pcs in stock as of  
4/18/2025 4:08:30 PM**

**Style Code: 0019-022**

**Approximate Weight 11.2 g**

**Description :**

Bangle Women Adjustable :  
TC : Size 7 : Leaves Heart  
design : Concave : Machine  
Rolled  
Stamping Satin DiaCut :  
Adjustable Lock : 14kt Gold



**Inside Diameter 58.0mm**

**Thickness: 8.0 mm ~ 12.0 mm**

**Stone Type:**

**We have 0 pcs in stock as of  
4/18/2025 4:08:30 PM**

**Style Code: 0019-170**

**Approximate Weight 15.7 g**

**Description :**

Bangle Women 7 Days  
Bunched : TC : Size 7.0 :  
Heart design : Tubing : CZ  
White (Apr) : 14kt Gold



**Inside Diameter**

**Thickness: 10.5 mm ~ 67.0 mm**

**Stone Type: CZ**

**We have 1 pcs in stock as of  
4/18/2025 4:08:30 PM**

**Style Code: 0019-175**

**Approximate Weight 14.9 g**

**Description :**

Bangle Women 7 Days  
Bunched : TC : Size 7.5 :  
Heart design : Tubing : CZ  
White (Apr) : 14kt Gold



**Inside Diameter**

**Thickness: 10.5 mm ~ 69.0 mm**

**Stone Type: CZ**

**We have 6 pcs in stock as of  
4/18/2025 4:08:30 PM**





## I.G.M. Corporation

Incas Gold Mine Corporation  
650 South Hill Street Suite #218  
Los Angeles, CA 90014  
Tel: (213)627-8916 Fax: (213)627-1990  
www.incasgoldmine.com email@incasgoldmine.com

### Order by Fax or Email

Please include the **Style Code** and the quantity of each style and fax or email the order to us.  
For an optional order form, please visit our website, [www.incasgoldmine.com/forms](http://www.incasgoldmine.com/forms)

Fax: (213)627-1990

email: [order@incasgoldmine.com](mailto:order@incasgoldmine.com)

Some items are NOT to Scale. View the Dimensions for an accurate measurement.



**Style Code: 0019-180**

**Approximate Weight 16.1 g**

**Description :**

Bangle Women 7 Days :  
Bunched : TC : Size 8.0 :  
Heart design : Tubing : CZ  
White (Apr) : 14kt Gold

**Inside Diameter**

**Thickness: 10.5 mm ~ 73.0 mm**

**Stone Type: CZ**

**We have 8 pcs in stock as of**  
4/18/2025 4:08:30 PM



**Style Code: 0020-170**

**Approximate Weight 30.3 g**

**Description :**

Bangle Women 7 Days : :  
Size 7 : Heart X or Star  
design : Machine Rolled Satin  
DiaCut : NO Lock/Clasp : 14kt  
Gold

**Inside Diameter 67.0mm**

**Thickness: 6.0 mm ~ 48.0 mm**

**Stone Type:**

**We have 0 pcs in stock as of**  
4/18/2025 4:08:30 PM



**Style Code: 0020-175**

**Approximate Weight 31.5 g**

**Description :**

Bangle Women 7 Days : TC :  
Size 7.5 : Heart X or Star  
design : Machine Rolled Satin  
DiaCut : NO Lock/Clasp : 14kt  
Gold

**Inside Diameter 70.0mm**

**Thickness: 6.0 mm ~ 48.0 mm**

**Stone Type:**

**We have 0 pcs in stock as of**  
4/18/2025 4:08:30 PM



**Style Code: 0020-180**

**Approximate Weight 35.8 g**

**Description :**

Bangle Women 7 Days : :  
Size 8 : Heart X or Star  
design : Machine Rolled Satin  
DiaCut : NO Lock/Clasp : 14kt  
Gold

**Inside Diameter 73.0mm**

**Thickness: 6.0 mm ~ 48.0 mm**

**Stone Type:**

**We have 0 pcs in stock as of**  
4/18/2025 4:08:30 PM



**Style Code: 0020-270**

**Approximate Weight 25.9 g**

**Description :**

Bangle Women 7 Days : :  
Size 7 : Heart X or Star  
design : Machine Rolled Satin  
DiaCut : NO Lock/Clasp : 14kt  
Gold

**Inside Diameter 67.0mm**

**Thickness: 4.0 mm ~ 28.0 mm**

**Stone Type:**

**We have 0 pcs in stock as of**  
4/18/2025 4:08:30 PM



**Style Code: 0020-275**

**Approximate Weight 27.5 g**

**Description :**

Bangle Women 7 Days : TC :  
Size 7.5 : Heart X or Star  
design : Machine Rolled Satin  
DiaCut : NO Lock/Clasp : 14kt  
Gold

**Inside Diameter 70.0mm**

**Thickness: 4.0 mm ~ 28.0 mm**

**Stone Type:**

**We have 0 pcs in stock as of**  
4/18/2025 4:08:30 PM



**Style Code: 0020-280**

**Approximate Weight 28.9 g**

**Description :**

Bangle Women 7 Days : :  
Size 8 : Heart X or Star  
design : Machine Rolled Satin  
DiaCut : NO Lock/Clasp : 14kt  
Gold

**Inside Diameter 73.0mm**

**Thickness: 4.0 mm ~ 28.0 mm**

**Stone Type:**

**We have 0 pcs in stock as of**  
4/18/2025 4:08:30 PM